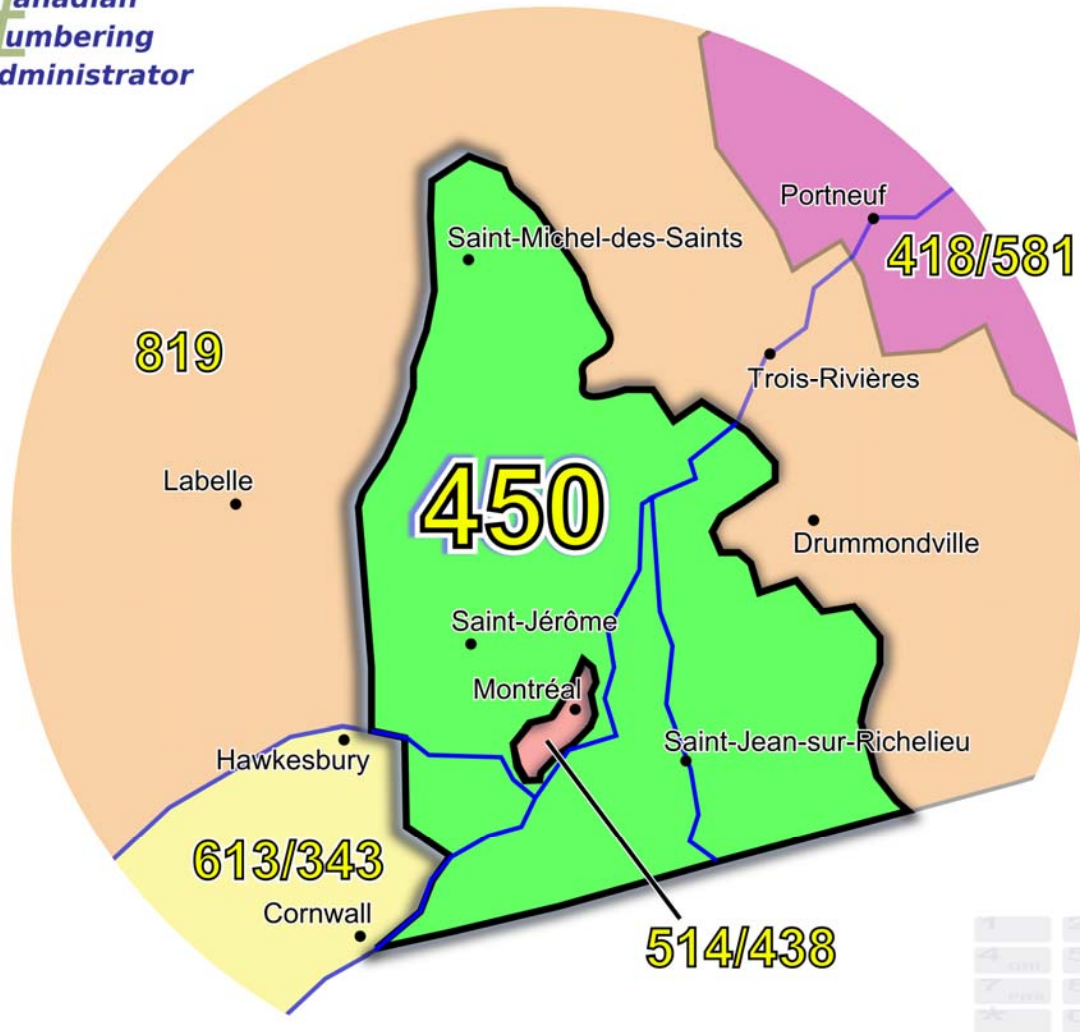


Annexes

Initial Planning Document

NPA 450 Numbering Relief



February 11, 2009

Canadian Numbering Administrator (CNA)
Suresh Khare
613-563-7242-315
60 Queen Street, Suite 1516
Ottawa, Ontario K1P 5Y7
khares@saiccanada.com

SAIC[®]
From Science to Solutions



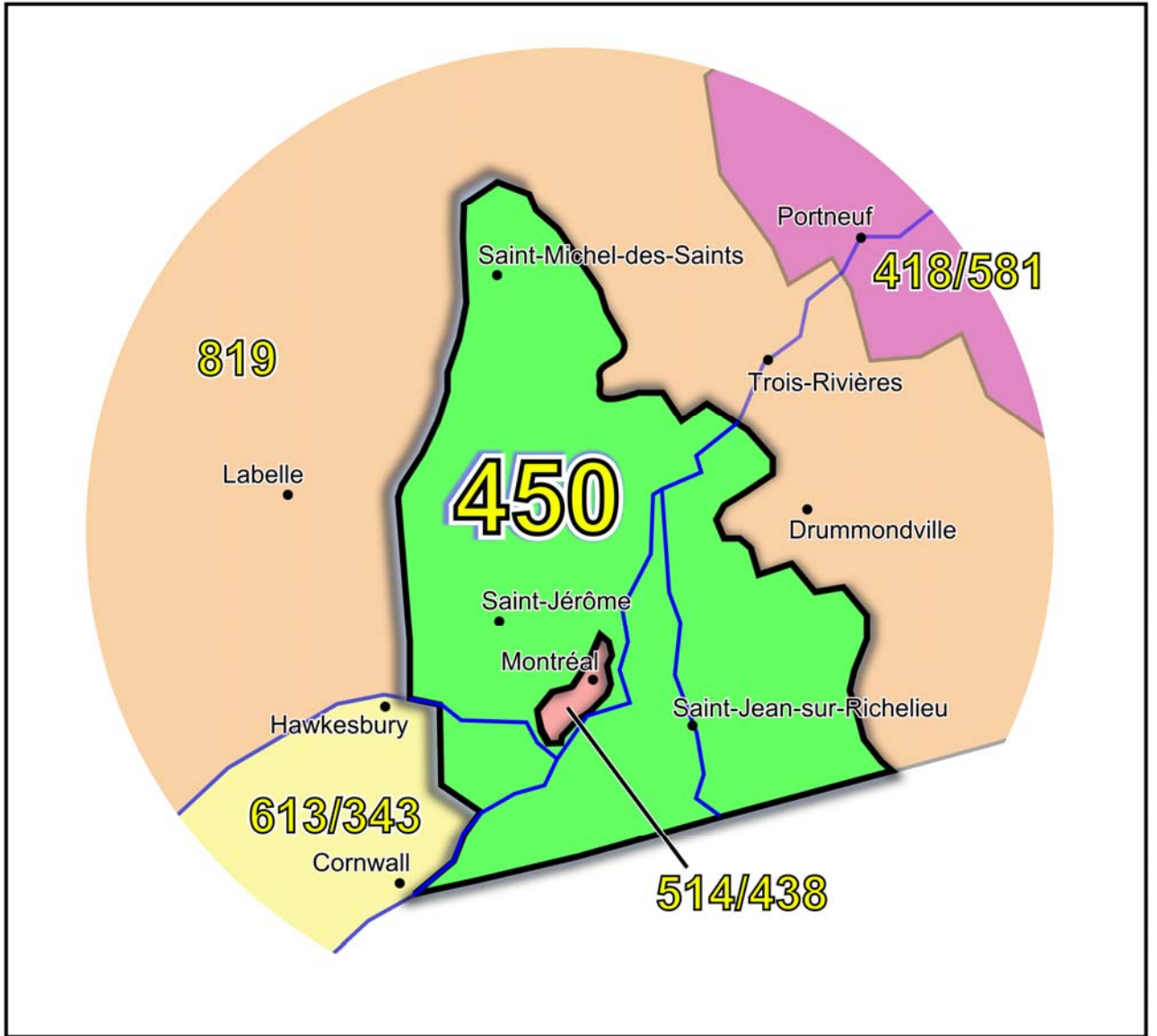


Figure 1 - Overview of NPA 450 and Adjacent NPAs

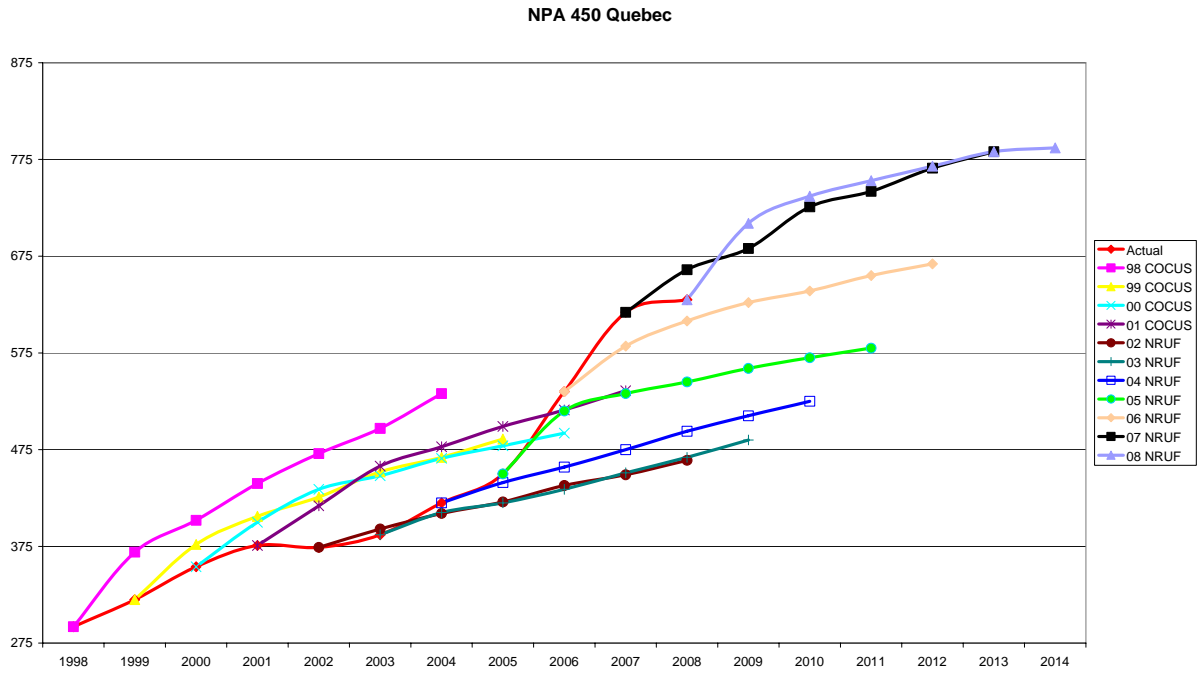


Figure 2 - NPA 450 Actual and Forecast CO Code Assignments

NPA 450 CO Code Exhaust January 2008 R-NRUF

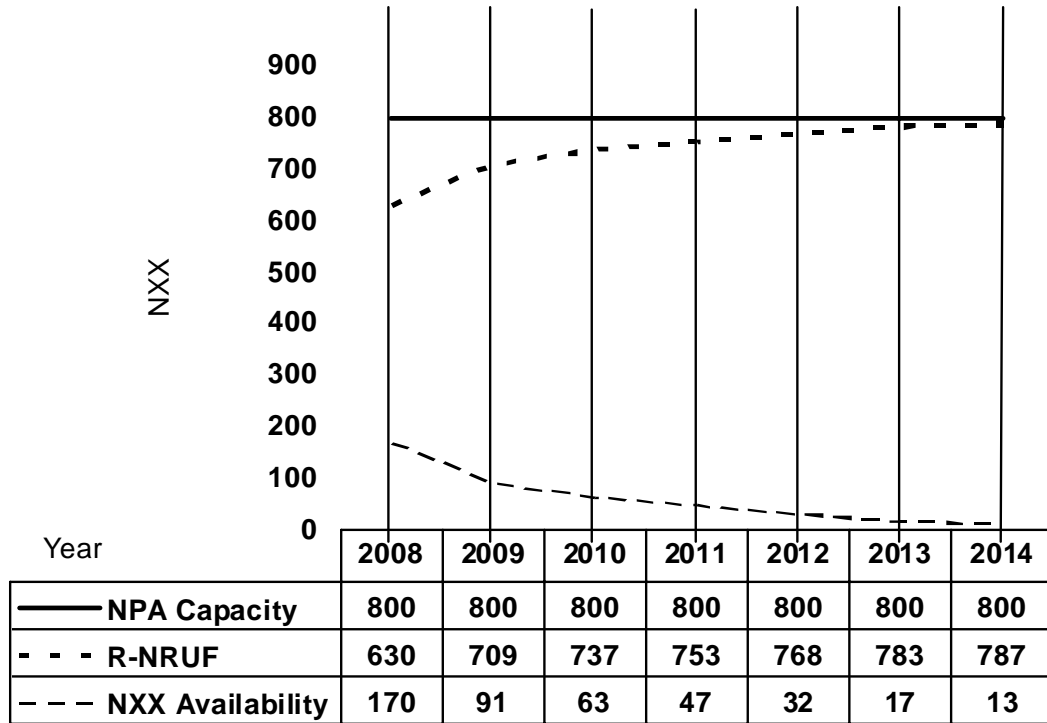


Figure 3 - NPA 450 CO Code Exhaust January 2008 R-NRUF

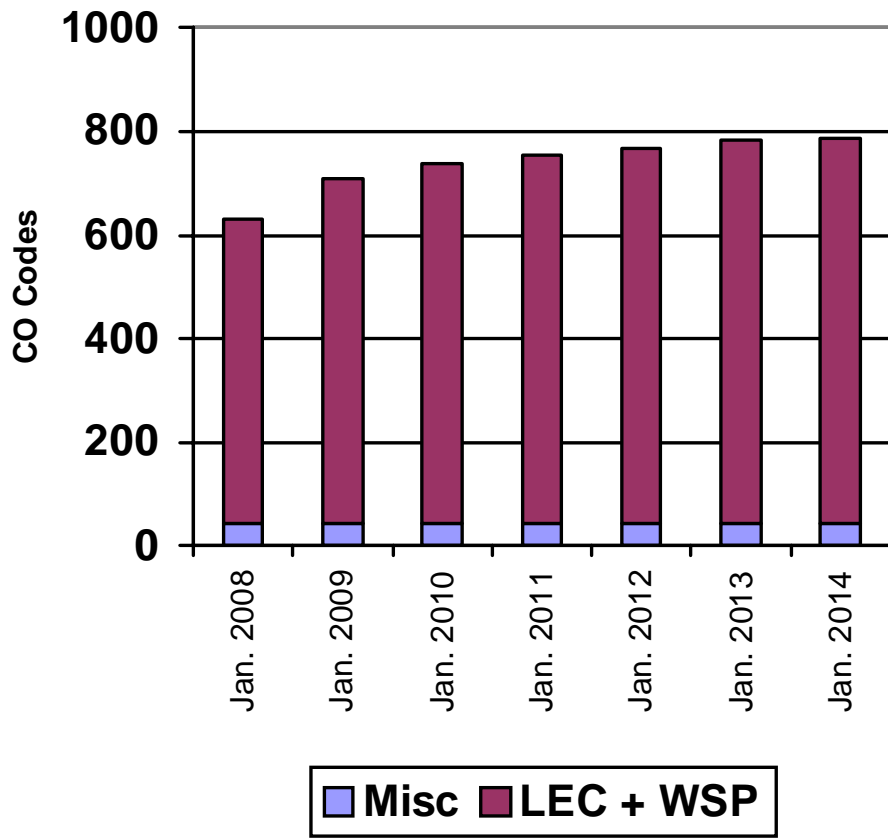


Figure 4 - NPA 450 CO Code Exhaust January 2008 R-NRUF

NPA 450 CO Code Exhaust July 2008 R-NRUF

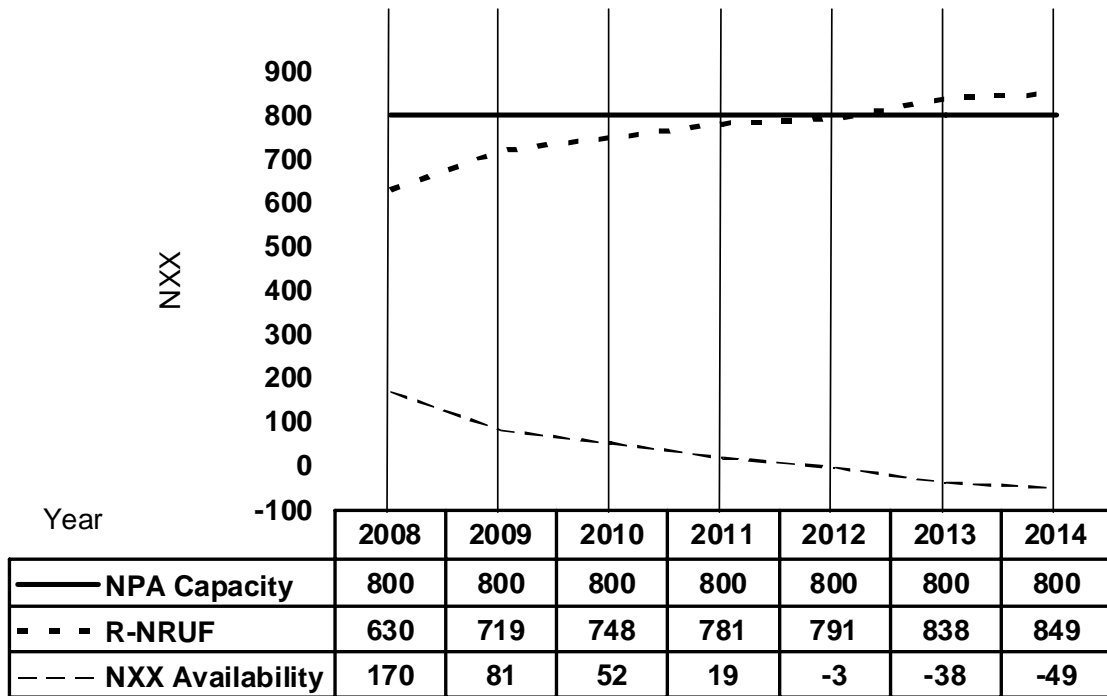


Figure 5 - NPA 450 CO Code Exhaust July 2008 R-NRUF

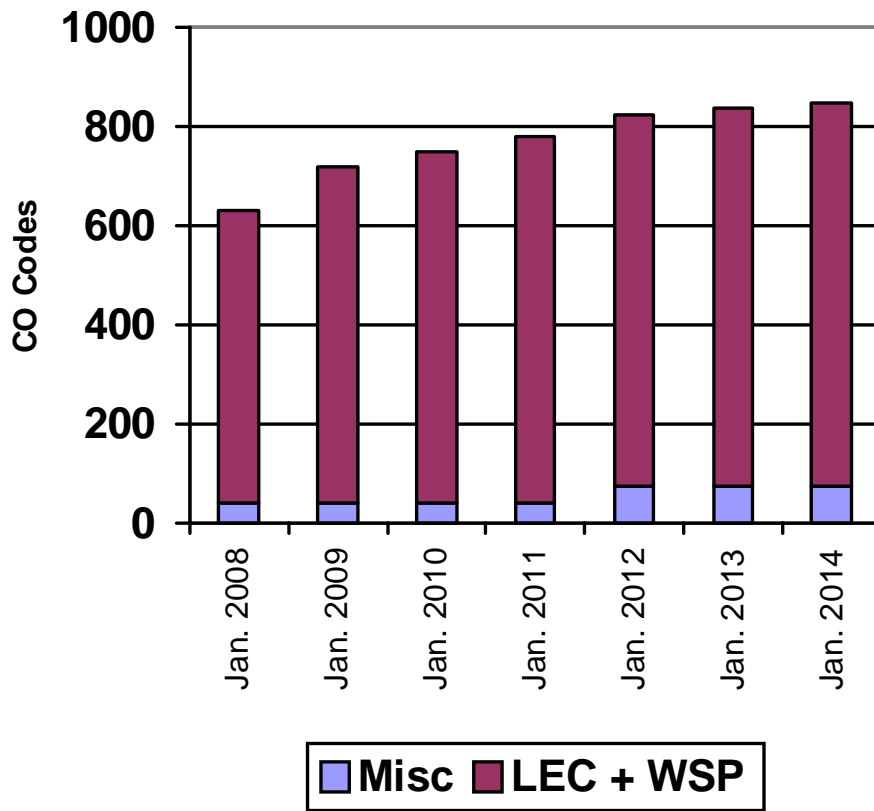


Figure 6 - NPA 450 CO Code Exhaust July 2008 R-NRUF

NPA 450 CO Code Exhaust as at 4 November 2008

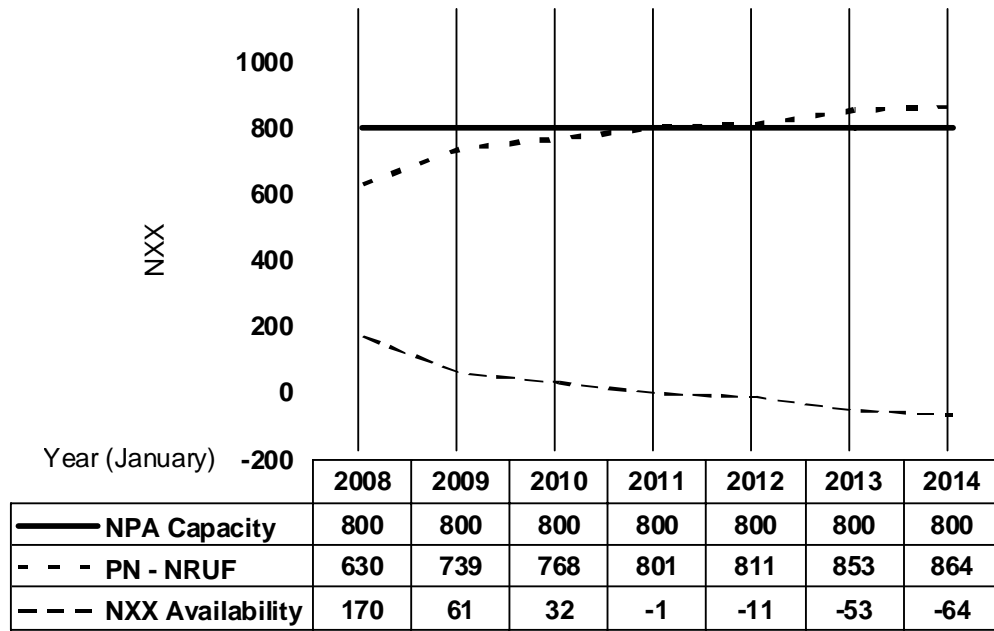


Figure 7 - NPA 450 CO Code Exhaust after release of Telecom Public Notice CRTC 2008-17 and 4 November 2008 CRTC Staff Opinion concerning additional July 2008 R-NRUF data

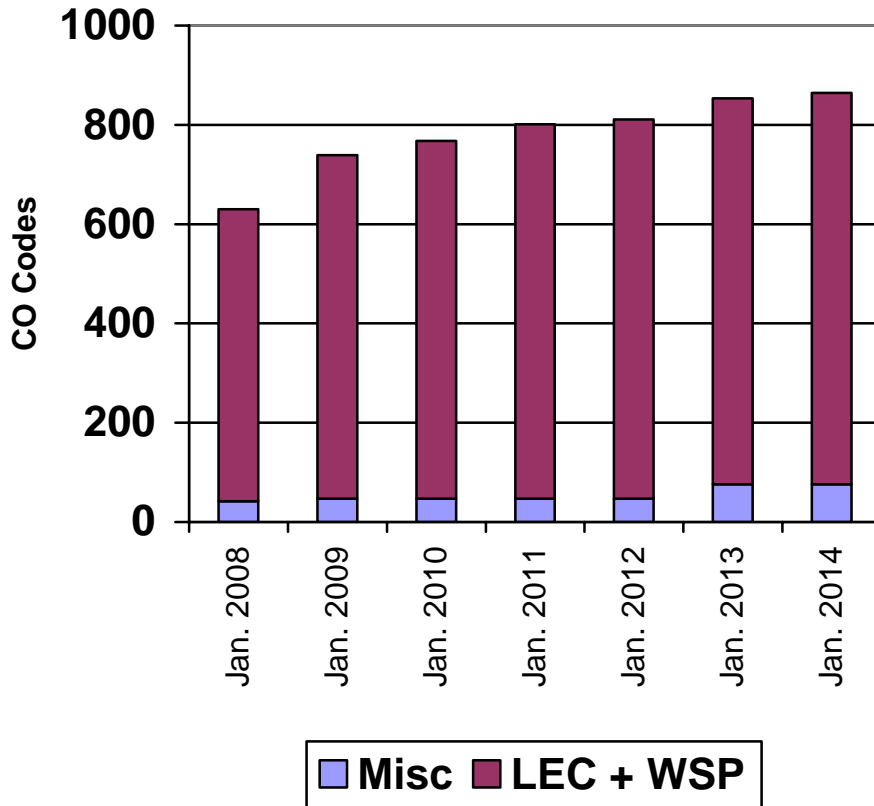


Figure 8 - NPA 450 CO Code Exhaust after release of Telecom Public Notice CRTC 2008-17 and 4 November 2008 CRTC Staff Opinion concerning additional July 2008 R-NRUF data

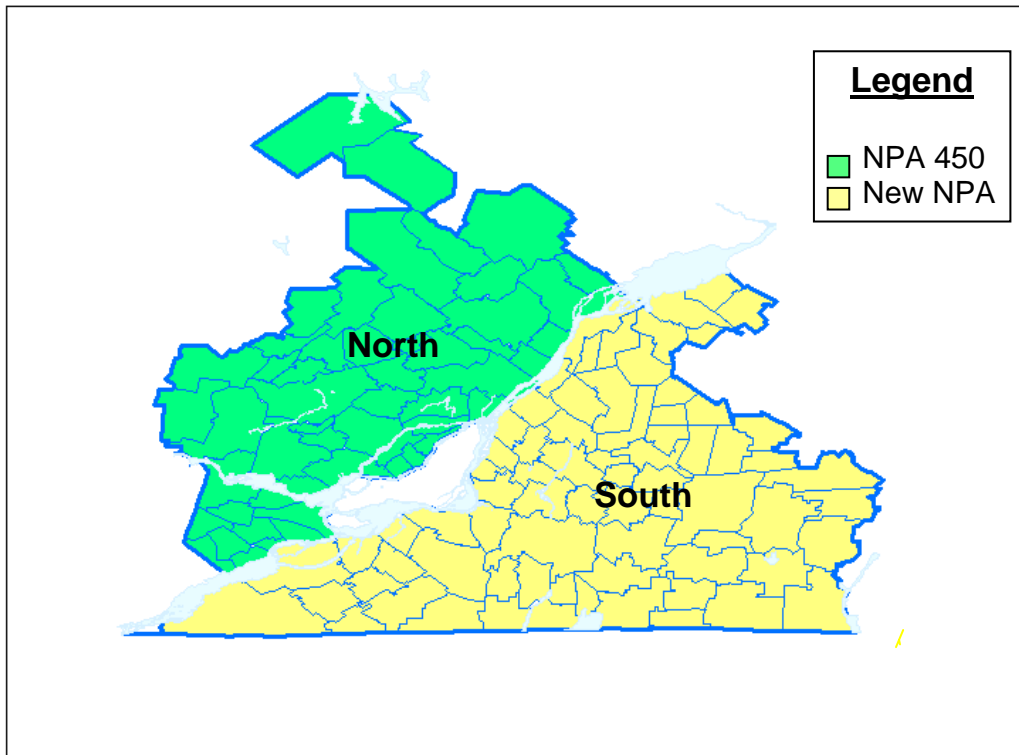


Figure 9 - Plan 1a: Split - St Lawrence River as the boundary (North retains NPA 450)

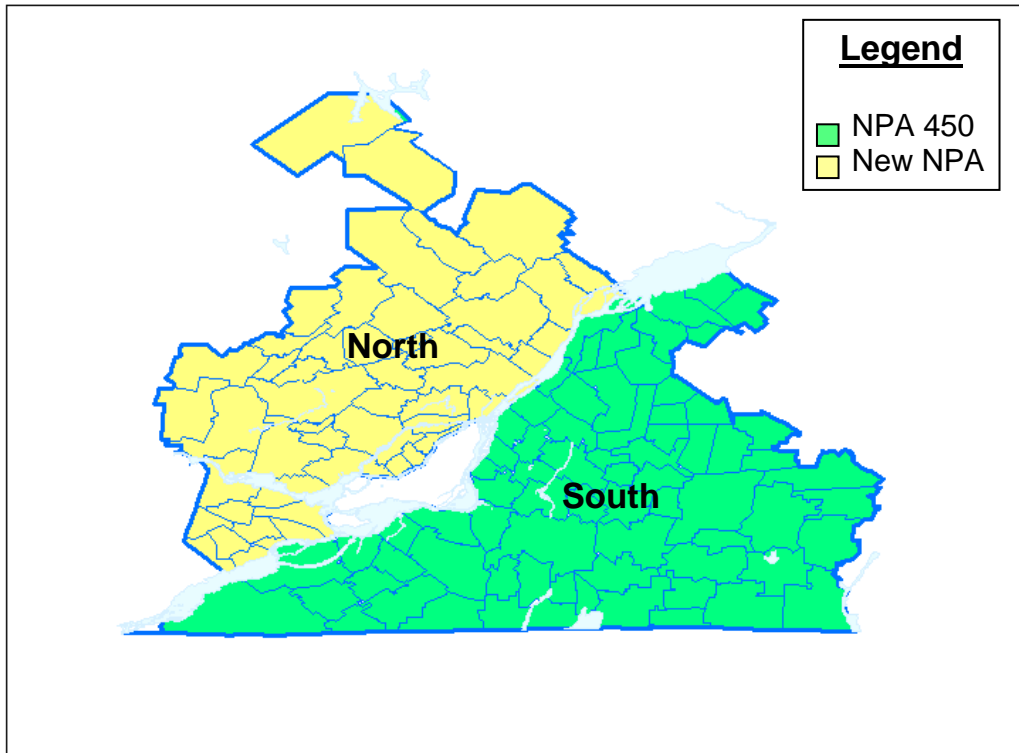


Figure 10 - Plan 1b: Split - St Lawrence River as the boundary (South retains NPA 450)

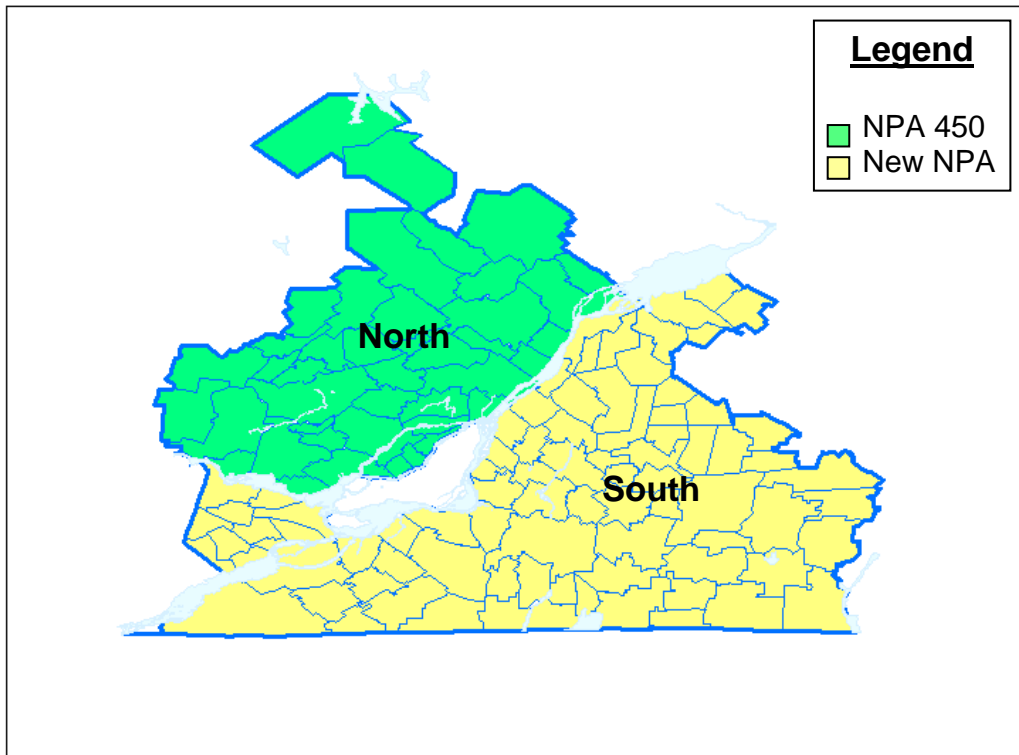


Figure 11 - Plan 2a: Split - St Lawrence and Ottawa Rivers as the boundary (North retains NPA 450)

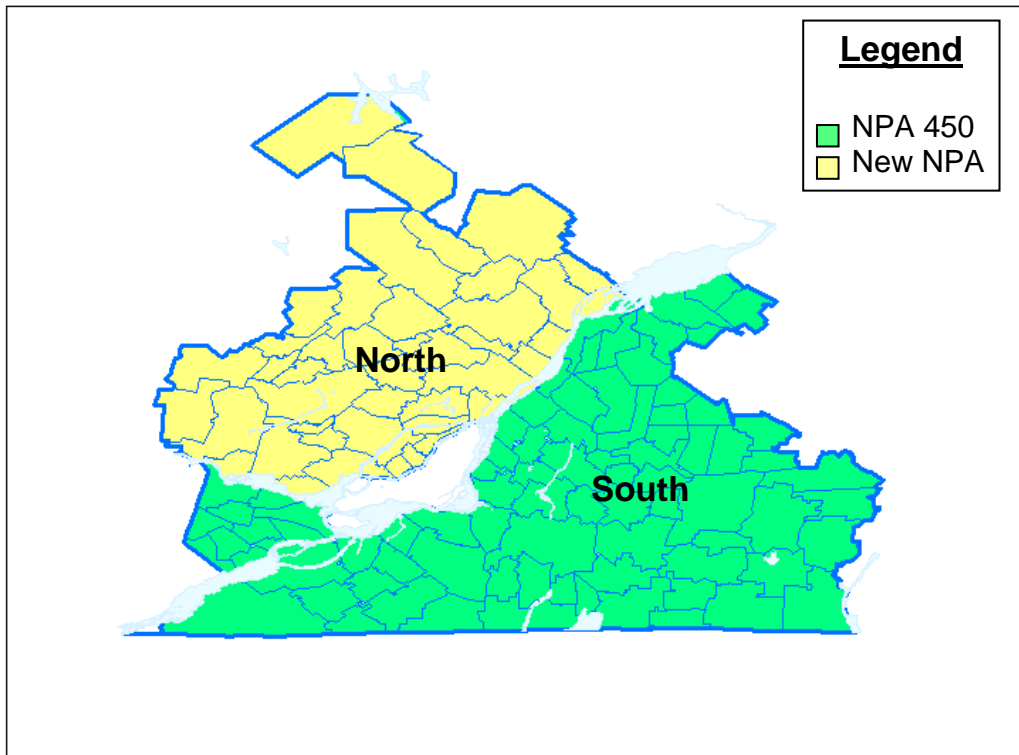


Figure 12 - Plan 2b: Split - St Lawrence and Ottawa Rivers as the boundary (South retains NPA 450)

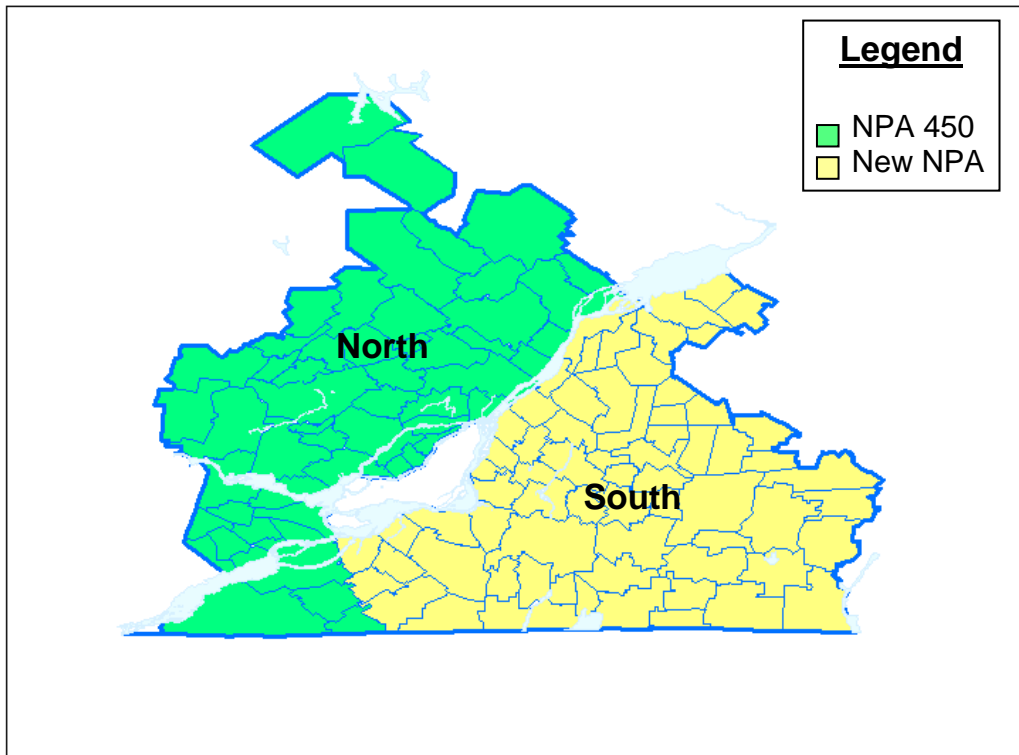


Figure 13 - Plan 3a: Split - St Lawrence and Ottawa Rivers as the boundary, LIR 04 in North (North retains NPA 450)

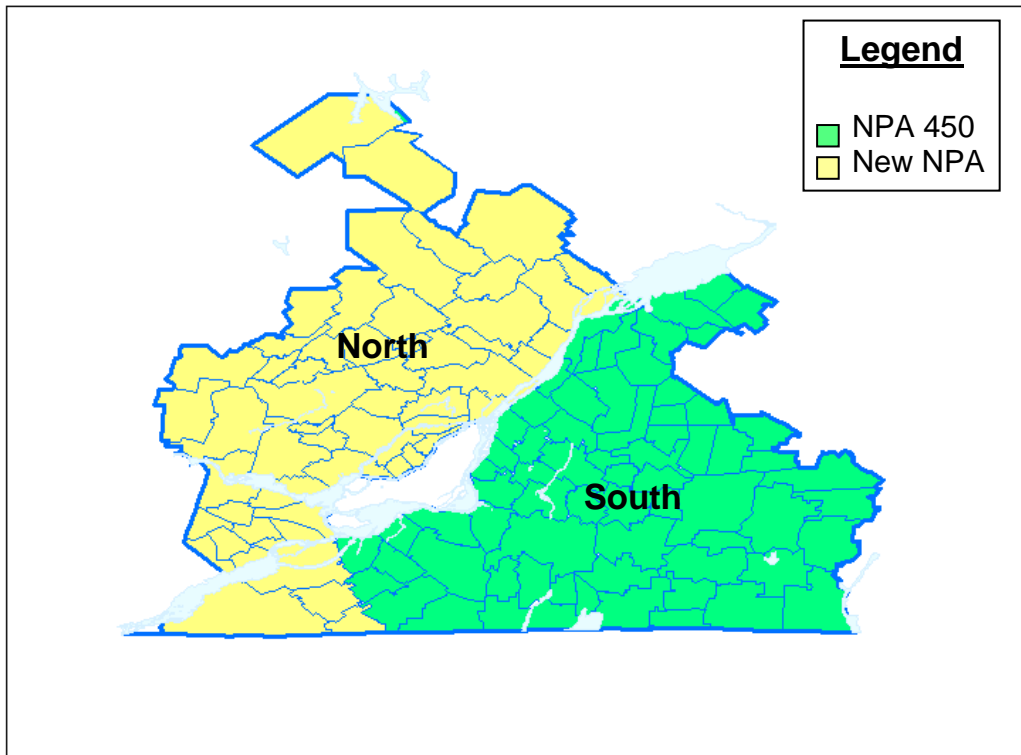


Figure 14 - Plan 3b: Split - St Lawrence and Ottawa Rivers as the boundary, LIR 04 in North (South retains NPA 450)

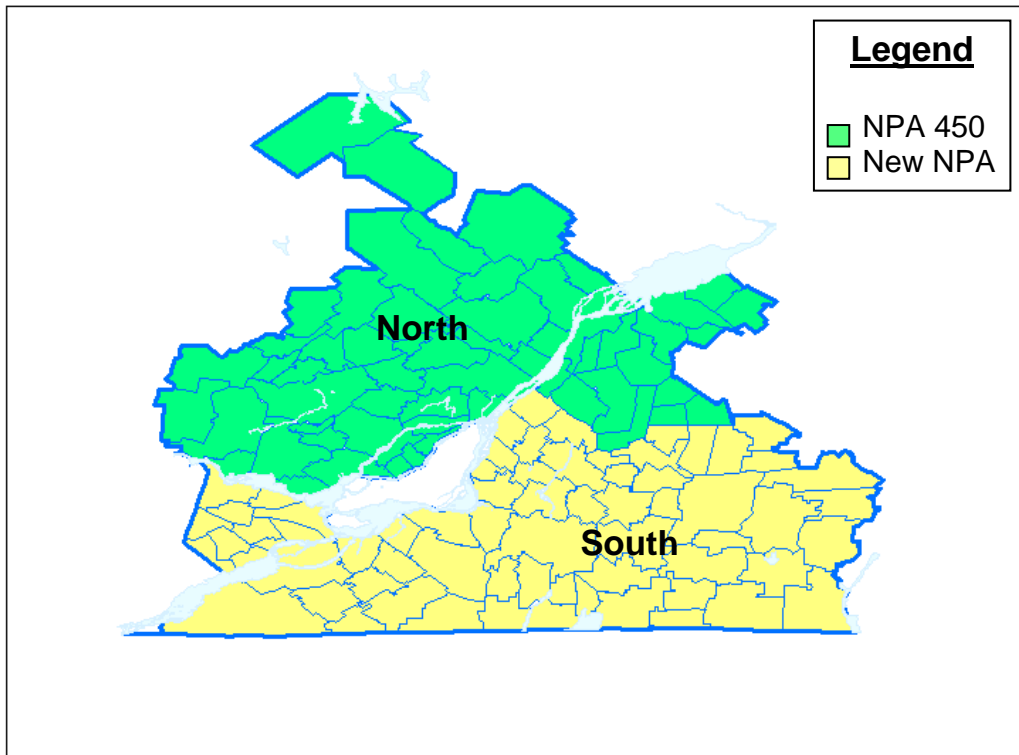


Figure 15 - Plan 4a: Split - LIR 16 (Sorel Region), Independent LIRs 07 & 08 & the Independent Exchange Area of Baie-du-Fèvre in North (North retains NPA 450)

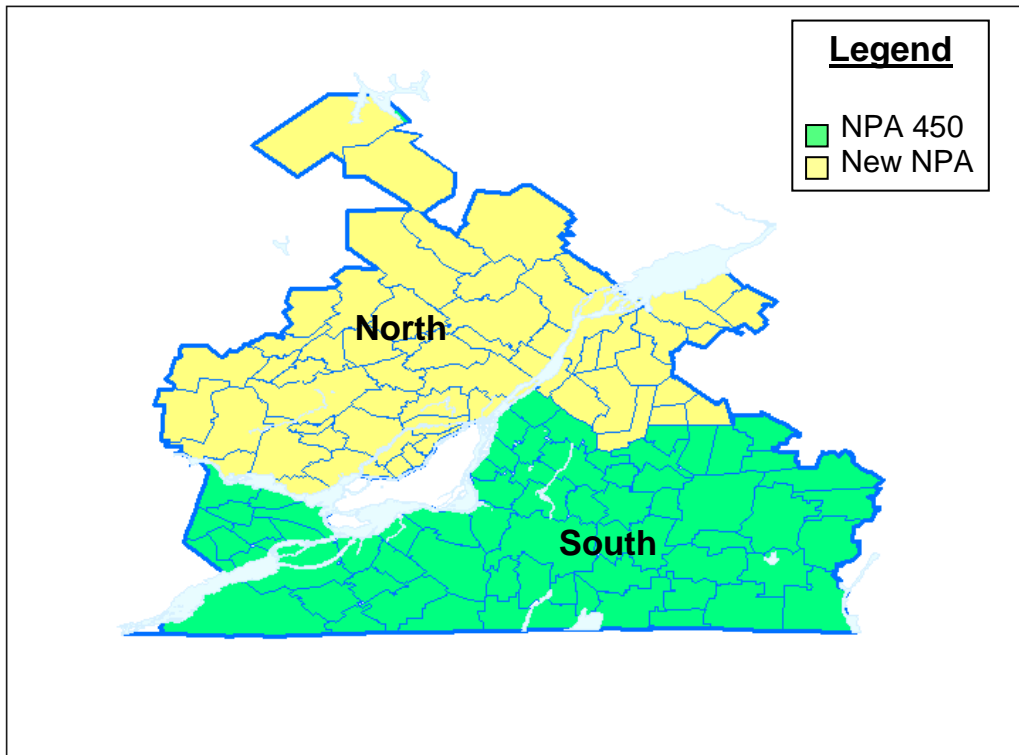
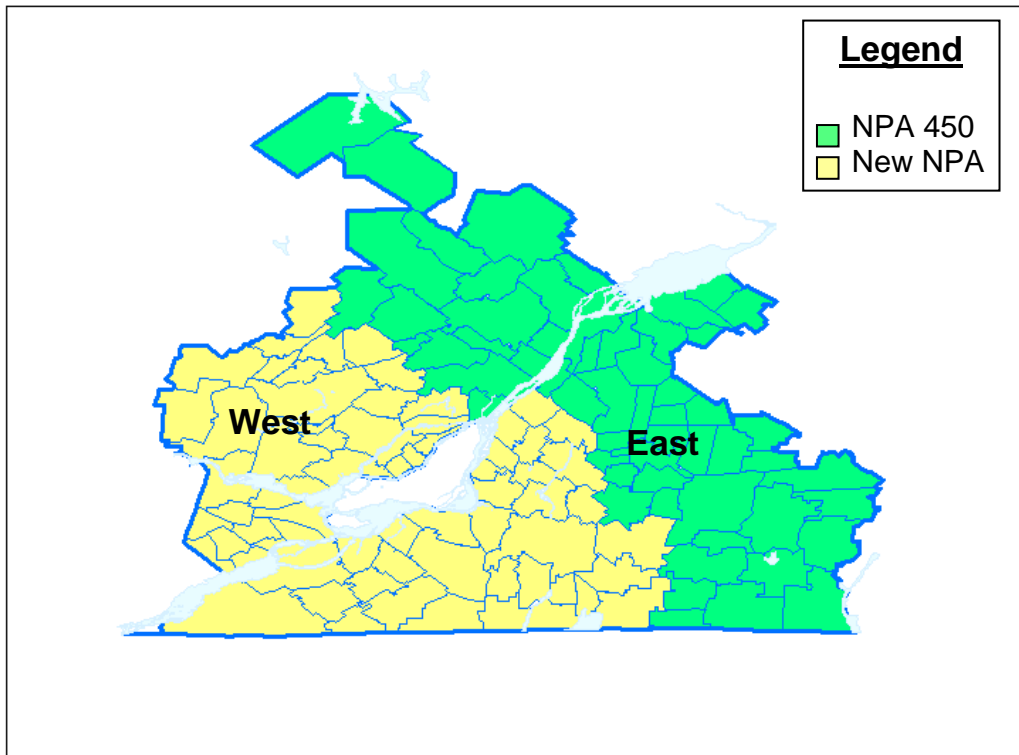


Figure 16 - Plan 4b: Split - LIR 16 (Sorel Region), Independent LIRs 07 & 08 & the Independent Exchange Area of Baie-du-Fèvre in North (South retains NPA 450)



**Figure 17 - Plan 5a: Split – East West Split – LIR 13 (Terrebonne – 2 Exchange Areas) in West
(East retains NPA 450)**

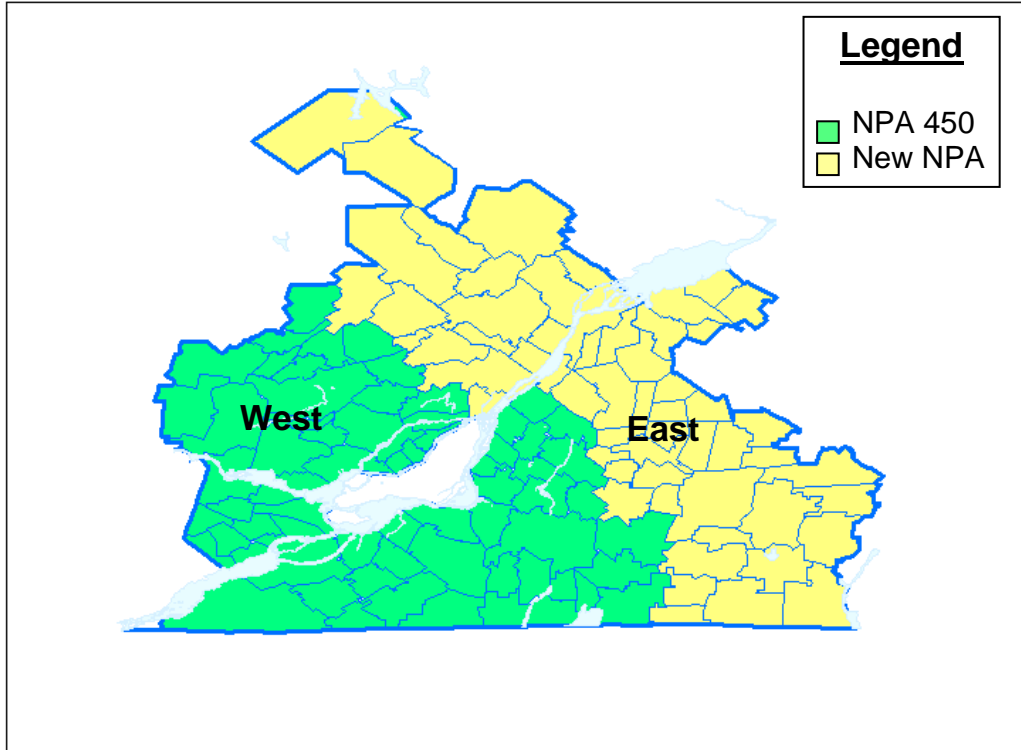


Figure 18 - Plan 5b: Split – East West Split – LIR 13 (Terrebonne – 2 Exchange Areas) in West (West retains NPA 450)

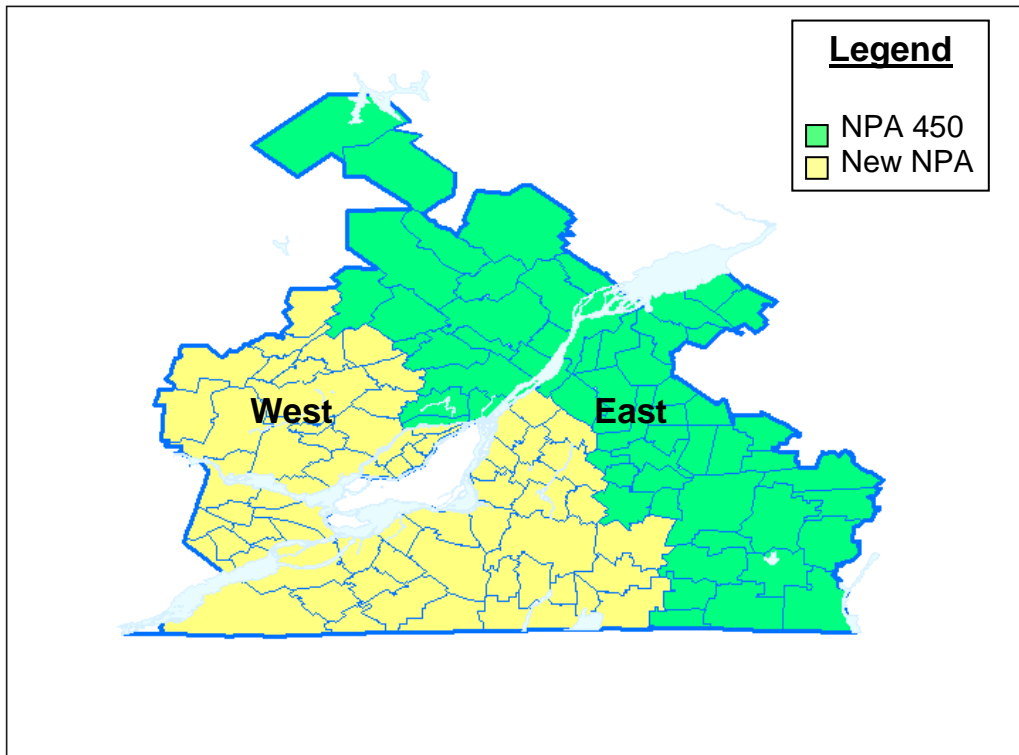


Figure 19 - Plan 6a: Split – East West Split – LIR 13 (Terrebonne – 2 Exchange Areas) in East (East retains NPA 450)

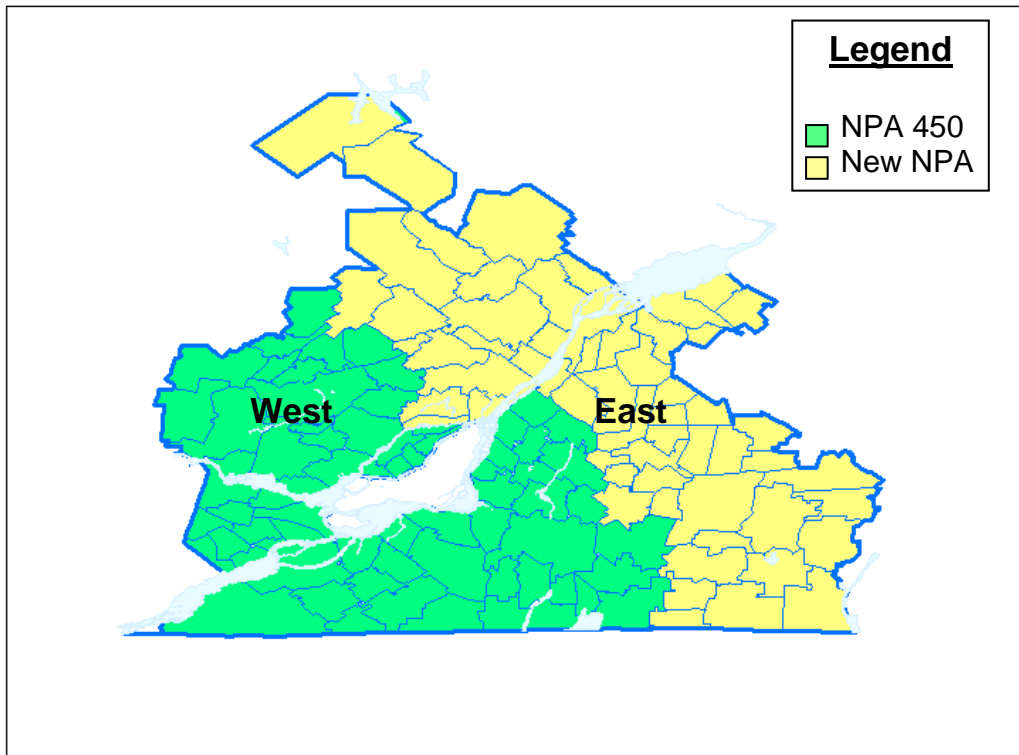


Figure 20 - Plan 6b: Split – East West Split – LIR 13 (Terrebonne – 2 Exchange Areas) in East (West retains NPA 450)

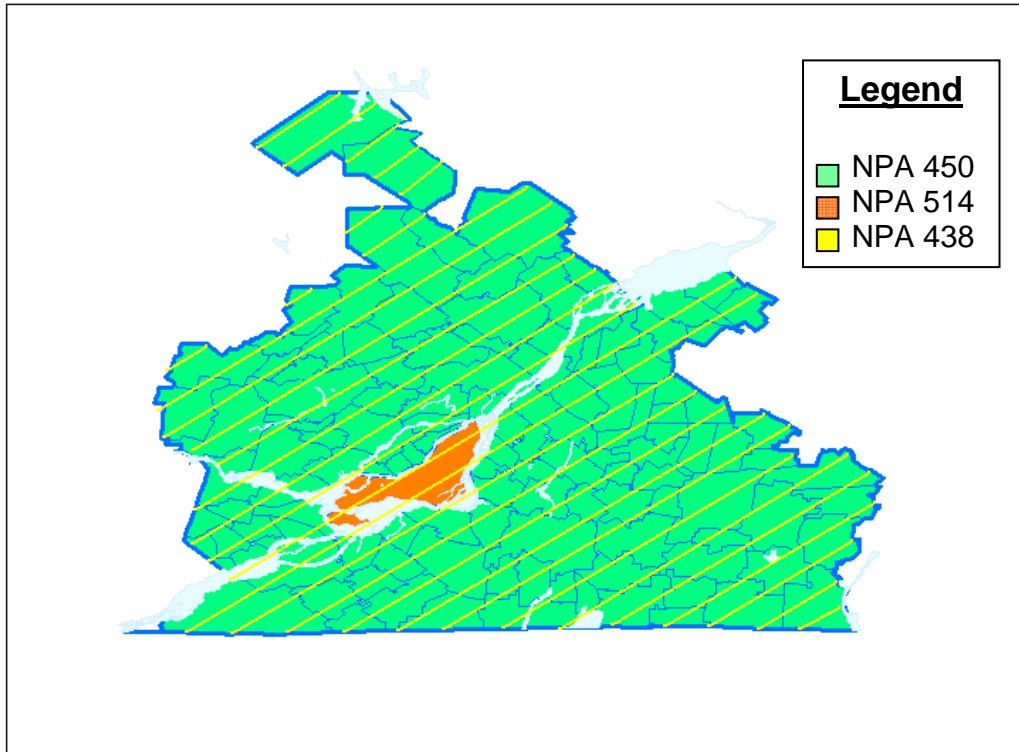


Figure 21 - Plan 7: NPA 438 Boundary Extension Overlay

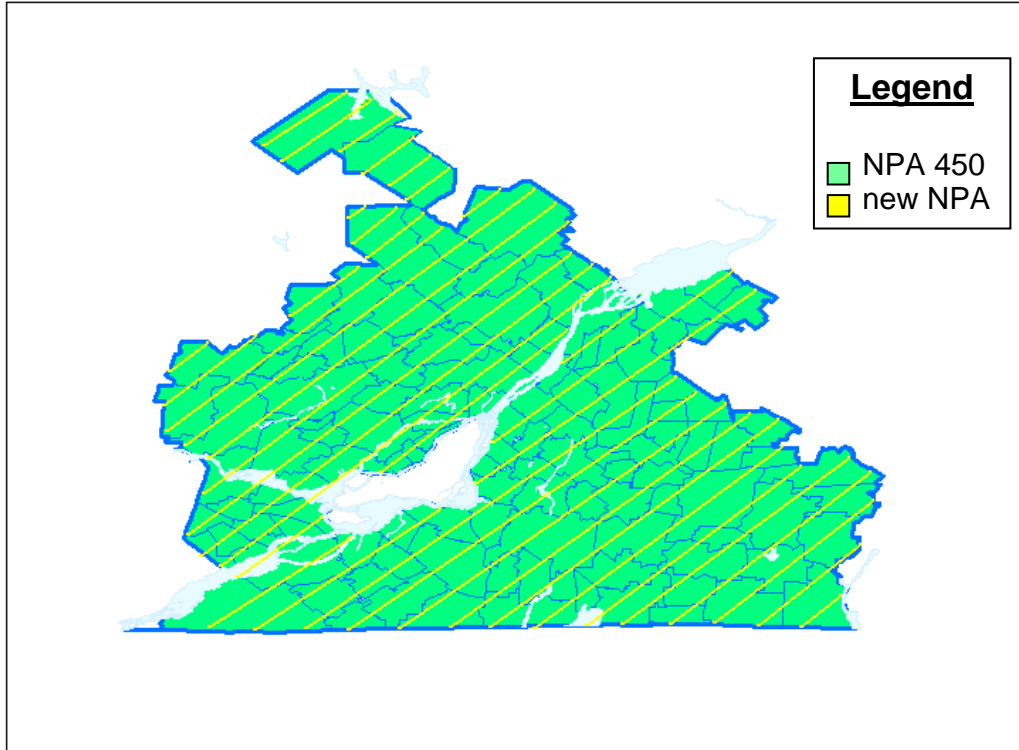


Figure 22 - Plan 8: Distributed Overlay of New NPA on NPA 450

Table 1 – Exchange Areas currently in NPA 450, and in NPAs 450, 438 and New NPA for these Exchange Areas after each Relief Plan

Exchange Area	Split 1a		Split 1b		Split 2a		Split 2b		Split 3a		Split 3b	
	NPA 450	New NPA	NPA 450	New NPA	NPA 450	New NPA	NPA 450	New NPA	NPA 450	New NPA	NPA 450	New NPA
Actonvale		✓	✓			✓	✓			✓	✓	
Baie-du-Fèvre		✓	✓			✓	✓			✓	✓	
Beauharnois		✓	✓			✓	✓			✓	✓	
Bedford		✓	✓			✓	✓			✓	✓	
Beloil		✓	✓			✓	✓			✓	✓	
Berthierville	✓			✓	✓			✓	✓			✓
Boucherville		✓	✓			✓	✓			✓	✓	
Bromont		✓	✓			✓	✓			✓	✓	
Brownsburg	✓			✓	✓			✓	✓			✓
Chambly		✓	✓			✓	✓			✓	✓	
Châteauguay		✓	✓			✓	✓			✓	✓	
Chomedey	✓			✓	✓			✓	✓			✓
Clarenceville		✓	✓			✓	✓			✓	✓	
Contrecoeur		✓	✓			✓	✓			✓	✓	
Côteau-du-Lac	✓			✓	✓			✓				✓
Côteau-Landing	✓			✓	✓			✓				✓
Cowansville		✓	✓			✓	✓			✓	✓	
Crabtree	✓			✓	✓			✓	✓			✓
Dunham		✓	✓			✓	✓			✓	✓	
Eastman		✓	✓			✓	✓			✓	✓	
Farnham		✓	✓			✓	✓			✓	✓	
Franklin Centre		✓	✓			✓	✓		✓			✓
Frelighsburg		✓	✓			✓	✓			✓	✓	
Granby		✓	✓			✓	✓			✓	✓	
Hemmingford		✓	✓			✓	✓			✓	✓	
Henryville		✓	✓			✓	✓			✓	✓	
Howick		✓	✓			✓	✓			✓	✓	
Hudson	✓			✓	✓			✓				✓
Huntingdon		✓	✓			✓	✓		✓			✓
Joliette	✓			✓	✓			✓	✓			✓
Knowlton		✓	✓			✓	✓			✓	✓	
Lachute	✓			✓	✓			✓	✓			✓
Lacolle		✓	✓			✓	✓			✓	✓	
Lanoraie	✓			✓	✓			✓	✓			✓
Laprairie		✓	✓			✓	✓			✓	✓	
Laval-Est	✓			✓	✓			✓	✓			✓
Laval-Ouest	✓			✓	✓			✓	✓			✓
Lavaltrie	✓			✓	✓			✓	✓			✓
Lawrenceville		✓	✓			✓	✓			✓	✓	
Le Gardeur	✓			✓	✓			✓	✓			✓

Exchange Area	Split 1a		Split 1b		Split 2a		Split 2b		Split 3a		Split 3b	
	NPA 450	New NPA	NPA 450	New NPA	NPA 450	New NPA	NPA 450	New NPA	NPA 450	New NPA	NPA 450	New NPA
L'Épiphanie-l'Assomption	✓			✓	✓			✓	✓			✓
Les Cèdres	✓			✓		✓	✓		✓			✓
Longueuil		✓	✓			✓	✓			✓	✓	
Mansonville		✓	✓			✓	✓			✓	✓	
Marieville		✓	✓			✓	✓			✓	✓	
Mascouche	✓			✓	✓			✓	✓			✓
Mirabel-Aéroport	✓			✓	✓			✓	✓			✓
Mirabel-St-Augustin	✓			✓	✓			✓	✓			✓
Mirabel-Ste-Scholastique	✓			✓	✓			✓	✓			✓
Morin Heights	✓			✓	✓			✓	✓			✓
Napierville		✓	✓			✓	✓			✓	✓	
Notre-Dame-de-Stanbridge		✓	✓			✓	✓			✓	✓	
Oka	✓			✓	✓			✓	✓			✓
Ormstown		✓	✓			✓	✓		✓			✓
Pierreville		✓	✓			✓	✓			✓	✓	
Pont-Viau	✓			✓	✓			✓	✓			✓
Rawdon	✓			✓	✓			✓	✓			✓
Rigaud	✓			✓		✓	✓		✓			✓
Rivière-Beaudette	✓			✓		✓	✓		✓			✓
Roxton Falls		✓	✓			✓	✓			✓	✓	
Shawbridge	✓			✓	✓			✓	✓			✓
Sorel		✓	✓			✓	✓			✓	✓	
St-Aimé		✓	✓			✓	✓			✓	✓	
St-Alphonse-de-Rodriguez	✓			✓	✓			✓	✓			✓
St-André-Est	✓			✓	✓			✓	✓			✓
St-Barthélémy	✓			✓	✓			✓	✓			✓
St-Blaise		✓	✓			✓	✓			✓	✓	
St-Bruno		✓	✓			✓	✓			✓	✓	
St-Calixte-de-Kilkenny	✓			✓	✓			✓	✓			✓
St-Césaire		✓	✓			✓	✓			✓	✓	
St-Chrysostôme		✓	✓			✓	✓			✓	✓	
St-Clet	✓			✓		✓	✓		✓			✓
St-Constant		✓	✓			✓	✓			✓	✓	
St-Damase		✓	✓			✓	✓			✓	✓	
St-Denis		✓	✓			✓	✓			✓	✓	
St-Eustache	✓			✓	✓			✓	✓			✓
St-Felix-de-Valois	✓			✓	✓			✓	✓			✓

Exchange Area	Split 1a		Split 1b		Split 2a		Split 2b		Split 3a		Split 3b	
	NPA 450	New NPA	NPA 450	New NPA	NPA 450	New NPA	NPA 450	New NPA	NPA 450	New NPA	NPA 450	New NPA
St-Gabriel-de-Brandon	✓			✓	✓			✓	✓			✓
St-Hippolyte	✓			✓	✓			✓	✓			✓
St-Hugues		✓	✓			✓	✓			✓	✓	
St-Hyacinthe		✓	✓			✓	✓			✓	✓	
St-Jacques	✓			✓	✓			✓	✓			✓
St-Jean		✓	✓			✓	✓			✓	✓	
St-Jean-de-Matha	✓			✓	✓			✓	✓			✓
St-Jérôme	✓			✓	✓			✓	✓			✓
St-Jude		✓	✓			✓	✓			✓	✓	
St-Lambert		✓	✓			✓	✓			✓	✓	
St-Liboire		✓	✓			✓	✓			✓	✓	
St-Lin	✓			✓	✓			✓	✓			✓
St-Marc		✓	✓			✓	✓			✓	✓	
St-Michel-des-Saints	✓			✓	✓			✓	✓			✓
St-Ours		✓	✓			✓	✓			✓	✓	
St-Paul-d'Abbottsford		✓	✓			✓	✓			✓	✓	
St-Pie		✓	✓			✓	✓			✓	✓	
St-Pie-de-Guire		✓	✓			✓	✓			✓	✓	
St-Polycarpe	✓			✓		✓	✓		✓			✓
St-Rémi		✓	✓			✓	✓			✓	✓	
St-Sauveur	✓			✓	✓			✓	✓			✓
St-Simon		✓	✓			✓	✓			✓	✓	
St-Thomas-d'Aquin		✓	✓			✓	✓			✓	✓	
St-Vincent-de-Paul	✓			✓	✓			✓	✓			✓
St-Zénon	✓			✓	✓			✓	✓			✓
St-Zéphirin		✓	✓			✓	✓			✓	✓	
Ste-Adèle	✓			✓	✓			✓	✓			✓
Ste-Anne-des-Plaines	✓			✓	✓			✓	✓			✓
Ste-Hélène-de-Bagot		✓	✓			✓	✓			✓	✓	
Ste-Julie-de-Verchères		✓	✓			✓	✓			✓	✓	
Ste-Julienne	✓			✓	✓			✓	✓			✓
Ste-Justine-de-Newton	✓			✓		✓	✓		✓			✓
Ste-Madeleine		✓	✓			✓	✓			✓	✓	
Ste-Marguerite	✓			✓	✓			✓	✓			✓
Ste-Marthe	✓			✓		✓	✓		✓			✓
Ste-Martine		✓	✓			✓	✓			✓	✓	
Ste-Rosalie		✓	✓			✓	✓			✓	✓	

Exchange Area	Split 1a		Split 1b		Split 2a		Split 2b		Split 3a		Split 3b	
	NPA 450	New NPA	NPA 450	New NPA	NPA 450	New NPA	NPA 450	New NPA	NPA 450	New NPA	NPA 450	New NPA
Ste-Rose	✓			✓	✓			✓	✓			✓
Ste-Thérèse	✓			✓	✓			✓	✓			✓
Ste-Victoire		✓	✓			✓	✓			✓	✓	
Sutton		✓	✓			✓	✓			✓	✓	
Terrebonne	✓			✓	✓			✓	✓			✓
Upton		✓	✓			✓	✓			✓	✓	
Valcourt		✓	✓			✓	✓			✓	✓	
Valleyfield		✓	✓			✓	✓		✓			✓
Varenes		✓	✓			✓	✓			✓	✓	
Vaudreuil	✓			✓		✓	✓		✓			✓
Venise-en-Québec		✓	✓			✓	✓			✓	✓	
Verchères		✓	✓			✓	✓			✓	✓	
Waterloo		✓	✓			✓	✓			✓	✓	
Yamaska		✓	✓			✓	✓			✓	✓	

Exchange Area	Split 4a		Split 4b		Split 5a		Split 5b		Split 6a		Split 6b	
	NPA 450	New NPA	NPA 450	New NPA	NPA 450	New NPA	NPA 450	New NPA	NPA 450	New NPA	NPA 450	New NPA
Actonvale		✓	✓		✓			✓	✓			✓
Baie-du-Fèvre	✓			✓	✓			✓	✓			✓
Beauharnois		✓	✓			✓	✓			✓	✓	
Bedford		✓	✓			✓	✓			✓	✓	
Beloil		✓	✓			✓	✓			✓	✓	
Berthierville	✓			✓	✓			✓	✓			✓
Boucherville		✓	✓			✓	✓			✓	✓	
Bromont		✓	✓		✓			✓	✓			✓
Brownsburg	✓			✓		✓	✓			✓	✓	
Chambly		✓	✓			✓	✓			✓	✓	
Châteauguay		✓	✓			✓	✓			✓	✓	
Chomedey	✓			✓		✓	✓			✓	✓	
Clarenceville		✓	✓			✓	✓			✓	✓	
Contrecoeur	✓			✓	✓			✓	✓			✓
Côteau-du-Lac		✓	✓			✓	✓			✓	✓	
Côteau-Landing		✓	✓			✓	✓			✓	✓	
Cowansville		✓	✓		✓			✓	✓			✓
Crabtree	✓			✓	✓			✓	✓			✓
Dunham		✓	✓		✓			✓	✓			✓
Eastman		✓	✓		✓			✓	✓			✓
Farnham		✓	✓			✓	✓			✓	✓	
Franklin Centre		✓	✓			✓	✓			✓	✓	
Frelighsburg		✓	✓		✓			✓	✓			✓
Granby		✓	✓		✓			✓	✓			✓
Hemmingford		✓	✓			✓	✓			✓	✓	

Exchange Area	Split 4a		Split 4b		Split 5a		Split 5b		Split 6a		Split 6b	
	NPA 450	New NPA	NPA 450	New NPA	NPA 450	New NPA	NPA 450	New NPA	NPA 450	New NPA	NPA 450	New NPA
Henryville		✓	✓			✓	✓			✓	✓	
Howick		✓	✓			✓	✓			✓	✓	
Hudson		✓	✓			✓	✓			✓	✓	
Huntingdon		✓	✓			✓	✓			✓	✓	
Joliette	✓			✓	✓			✓	✓			✓
Knowlton		✓	✓		✓			✓	✓			✓
Lachute	✓			✓		✓	✓			✓	✓	
Lacolle		✓	✓			✓	✓			✓	✓	
Lanoraie	✓			✓	✓			✓	✓			✓
Laprairie		✓	✓			✓	✓			✓	✓	
Laval-Est	✓			✓		✓	✓			✓	✓	
Laval-Ouest	✓			✓		✓	✓			✓	✓	
Lavaltrie	✓			✓	✓			✓	✓			✓
Lawrenceville		✓	✓		✓			✓	✓			✓
Le Gardeur	✓			✓	✓			✓	✓			✓
L'Épiphanie- l'Assomption	✓			✓	✓			✓	✓			✓
Les Cèdres		✓	✓			✓	✓			✓	✓	
Longueuil		✓	✓			✓	✓			✓	✓	
Mansonville		✓	✓		✓			✓	✓			✓
Marieville		✓	✓			✓	✓			✓	✓	
Mascouche	✓			✓		✓	✓		✓			✓
Mirabel-Aéroport	✓			✓		✓	✓			✓	✓	
Mirabel-St- Augustin	✓			✓		✓	✓			✓	✓	
Mirabel-Ste- Scholastique	✓			✓		✓	✓			✓	✓	
Morin Heights	✓			✓		✓	✓			✓	✓	
Napierville		✓	✓			✓	✓			✓	✓	
Notre-Dame-de- Stanbridge		✓	✓			✓	✓			✓	✓	
Oka	✓			✓		✓	✓			✓	✓	
Ormstown		✓	✓			✓	✓			✓	✓	
Pierreville	✓			✓	✓			✓	✓			✓
Pont-Viau	✓			✓		✓	✓			✓	✓	
Rawdon	✓			✓	✓			✓	✓			✓
Rigaud		✓	✓			✓	✓			✓	✓	
Rivière-Beaudette		✓	✓			✓	✓			✓	✓	
Roxton Falls		✓	✓		✓			✓	✓			✓
Shawbridge	✓			✓		✓	✓			✓	✓	
Sorel	✓			✓	✓			✓	✓			✓
St-Aimé	✓			✓	✓			✓	✓			✓
St-Alphonse-de- Rodriguez	✓			✓		✓		✓	✓			✓
St-André-Est	✓			✓		✓	✓			✓	✓	
St-Barthélemy	✓			✓	✓			✓	✓			✓

Exchange Area	Split 4a		Split 4b		Split 5a		Split 5b		Split 6a		Split 6b	
	NPA 450	New NPA	NPA 450	New NPA	NPA 450	New NPA	NPA 450	New NPA	NPA 450	New NPA	NPA 450	New NPA
St-Blaise		✓	✓			✓	✓			✓	✓	
St-Bruno		✓	✓			✓	✓			✓	✓	
St-Calixte-de-Kilkenny	✓			✓			✓			✓	✓	
St-Césaire		✓	✓		✓			✓	✓			✓
St-Chrysostome		✓	✓			✓	✓			✓	✓	
St-Clet		✓	✓			✓	✓			✓	✓	
St-Constant		✓	✓			✓	✓			✓	✓	
St-Damase		✓	✓		✓			✓	✓			✓
St-Denis	✓			✓	✓			✓	✓			✓
Ste-Adèle	✓			✓		✓	✓			✓	✓	
Ste-Anne-des-Plaines	✓			✓		✓	✓			✓	✓	
Ste-Hélène-de-Bagot	✓			✓		✓		✓	✓			✓
Ste-Julie-de-Verchères		✓	✓			✓	✓			✓	✓	
Ste-Julienne	✓			✓	✓			✓	✓			✓
Ste-Justine-de-Newton		✓	✓				✓	✓			✓	✓
Ste-Madeleine		✓	✓		✓			✓	✓			✓
Ste-Marguerite	✓			✓		✓	✓			✓	✓	
Ste-Marthe		✓	✓			✓	✓			✓	✓	
Ste-Martine		✓	✓			✓	✓			✓	✓	
Ste-Rosalie		✓	✓		✓			✓	✓			✓
Ste-Rose	✓			✓		✓	✓			✓	✓	
Ste-Thérèse	✓			✓		✓	✓			✓	✓	
St-Eustache	✓			✓		✓	✓			✓	✓	
St-Victoire	✓			✓	✓			✓	✓			✓
St-Felix-de-Valois	✓			✓	✓			✓	✓			✓
St-Gabriel-de-Brandon	✓			✓	✓			✓	✓			✓
St-Hippolyte	✓			✓		✓	✓			✓	✓	
St-Hugues	✓			✓	✓			✓	✓			✓
St-Hyacinthe		✓	✓		✓			✓	✓			✓
St-Jacques	✓			✓	✓			✓	✓			✓
St-Jean		✓	✓			✓	✓			✓	✓	
St-Jean-de-Matha	✓			✓	✓			✓	✓			✓
St-Jérôme	✓			✓		✓	✓			✓	✓	
St-Jude	✓			✓	✓			✓	✓			✓
St-Lambert		✓	✓			✓	✓			✓	✓	
St-Liboire		✓	✓		✓			✓	✓			✓
St-Lin	✓			✓		✓	✓			✓	✓	
St-Marc		✓	✓			✓	✓			✓	✓	
St-Michel-des-Saints	✓			✓	✓			✓	✓			✓
St-Ours	✓			✓	✓			✓	✓			✓

Exchange Area	Split 4a		Split 4b		Split 5a		Split 5b		Split 6a		Split 6b	
	NPA 450	New NPA	NPA 450	New NPA	NPA 450	New NPA	NPA 450	New NPA	NPA 450	New NPA	NPA 450	New NPA
St-Paul-d'Abbotsford		✓	✓		✓			✓	✓			✓
St-Pie		✓	✓		✓			✓	✓			✓
St-Pie-de-Guire	✓			✓	✓			✓	✓			✓
St-Polycarpe		✓	✓			✓	✓			✓	✓	
St-Rémi		✓	✓			✓	✓			✓	✓	
St-Sauveur	✓			✓		✓	✓			✓	✓	
St-Simon	✓			✓	✓			✓	✓			✓
St-Thomas-d'Aquin	✓			✓	✓			✓	✓			✓
St-Vincent-de-Paul	✓			✓		✓	✓			✓	✓	
St-Zénon	✓			✓	✓			✓	✓			✓
St-Zéphirin	✓			✓	✓			✓	✓			✓
Sutton		✓	✓		✓			✓	✓			✓
Terrebonne	✓			✓		✓	✓		✓			✓
Upton		✓	✓		✓			✓	✓			✓
Valcourt		✓	✓		✓			✓	✓			✓
Valleyfield		✓	✓			✓	✓			✓	✓	
Varenes		✓	✓			✓	✓			✓	✓	
Vaudreuil		✓	✓			✓	✓			✓	✓	
Venise-en-Québec		✓	✓			✓	✓			✓	✓	
Verchères		✓	✓			✓	✓			✓	✓	
Waterloo		✓	✓		✓			✓	✓			✓
Yamaska	✓			✓	✓			✓	✓			✓

Exchange Area	Plan 7 NPA 438 Boundary Realignment	Plan 8 Distributed Overlay
Ile-Perrot	✓	
Lachine	✓	
Montreal	✓	
Pointe Claire	✓	
Roxboro	✓	
Ste-Geneviève	✓	
Actonvale	✓	✓
Baie-du-Fèvre	✓	✓
Beauharnois	✓	✓
Bedford	✓	✓
Beloil	✓	✓
Berthierville	✓	✓
Boucherville	✓	✓
Bromont	✓	✓
Brownsburg	✓	✓

	Plan 7	Plan 8
Exchange Area	NPA 438 Boundary Realignment	Distributed Overlay
Chambly	✓	✓
Châteauguay	✓	✓
Chomedey	✓	✓
Clarenceville	✓	✓
Contrecoeur	✓	✓
Côteau-du-Lac	✓	✓
Côteau-Landing	✓	✓
Cowansville	✓	✓
Crabtree	✓	✓
Dunham	✓	✓
Eastman	✓	✓
Farnham	✓	✓
Franklin Centre	✓	✓
Frelighsburg	✓	✓
Granby	✓	✓
Hemmingford	✓	✓
Henryville	✓	✓
Howick	✓	✓
Hudson	✓	✓
Huntingdon	✓	✓
Joliette	✓	✓
Knowlton	✓	✓
Lachute	✓	✓
Lacolle	✓	✓
Lanoraie	✓	✓
Laprairie	✓	✓
Laval-Est	✓	✓
Laval-Ouest	✓	✓
Lavaltrie	✓	✓
Lawrenceville	✓	✓
Le Gardeur	✓	✓
L'Épiphanie-l'Assomption	✓	✓
Les Cèdres	✓	✓
Longueuil	✓	✓
Mansonville	✓	✓
Marieville	✓	✓
Mascouche	✓	✓
Mirabel-Aéroport	✓	✓
Mirabel-St-Augustin	✓	✓
Mirabel-Ste-Scholastique	✓	✓
Morin Heights	✓	✓
Napierville	✓	✓
Notre-Dame-de-Stanbridge	✓	✓
Oka	✓	✓
Ormstown	✓	✓

	Plan 7	Plan 8
Exchange Area	NPA 438 Boundary Realignment	Distributed Overlay
Pierreville	✓	✓
Pont-Viau	✓	✓
Rawdon	✓	✓
Rigaud	✓	✓
Rivière-Beaudette	✓	✓
Roxton Falls	✓	✓
Shawbridge	✓	✓
Sorel	✓	✓
St-Aimé	✓	✓
St-Alphonse-de-Rodriguez	✓	✓
St-André-Est	✓	✓
St-Barthélémy	✓	✓
St-Blaise	✓	✓
St-Bruno	✓	✓
St-Calixte-de-Kilkenny	✓	✓
St-Césaire	✓	✓
St-Chrysostôme	✓	✓
St-Clet	✓	✓
St-Constant	✓	✓
St-Damase	✓	✓
St-Denis	✓	✓
Ste-Adèle	✓	✓
Ste-Anne-des-Plaines	✓	✓
Ste-Hélène-de-Bagot	✓	✓
Ste-Julie-de-Verchères	✓	✓
Ste-Julienne	✓	✓
Ste-Justine-de-Newton	✓	✓
Ste-Madeleine	✓	✓
Ste-Marguerite	✓	✓
Ste-Marthe	✓	✓
Ste-Martine	✓	✓
Ste-Rosalie	✓	✓
Ste-Rose	✓	✓
Ste-Thérèse	✓	✓
St-Eustache	✓	✓
Ste-Victoire	✓	✓
St-Felix-de-Valois	✓	✓
St-Gabriel-de-Brandon	✓	✓
St-Hippolyte	✓	✓
St-Hugues	✓	✓
St-Hyacinthe	✓	✓
St-Jacques	✓	✓
St-Jean	✓	✓
St-Jean-de-Matha	✓	✓
St-Jérôme	✓	✓

	Plan 7	Plan 8
Exchange Area	NPA 438 Boundary Realignment	Distributed Overlay
St-Jude	✓	✓
St-Lambert	✓	✓
St-Liboire	✓	✓
St-Lin	✓	✓
St-Marc	✓	✓
St-Michel-des-Saints	✓	✓
St-Ours	✓	✓
St-Paul-d'Abbottsford	✓	✓
St-Pie	✓	✓
St-Pie-de-Guire	✓	✓
St-Polycarpe	✓	✓
St-Rémi	✓	✓
St-Sauveur	✓	✓
St-Simon	✓	✓
St-Thomas-d'Aquin	✓	✓
St-Vincent-de-Paul	✓	✓
St-Zénon	✓	✓
St-Zéphirin	✓	✓
Sutton	✓	✓
Terrebonne	✓	✓
Upton	✓	✓
Valcourt	✓	✓
Valleyfield	✓	✓
Varenes	✓	✓
Vaudreuil	✓	✓
Venise-en-Québec	✓	✓
Verchères	✓	✓
Waterloo	✓	✓
Yamaska	✓	✓

Table 2 – Exchange Areas by LIR

LIR	Exchange Area	LIR	Exchange Area	LIR	Exchange Area
LIR-PQ03	Brownsburg Lachute Morin Heights Shawbridge St-André-Est Ste-Adèle Ste-Marguerite St-Sauveur	LIR-PQ11	Bedford Clarenceville Farnham Hemmingford Henryville Lacolle Napierville St-Blaise St-Jean	LIR-17PQ	Actonvale St-Damase Ste-Madeleine St-Hyacinthe St-Pie
LIR-PQ04	Côteau-du-Lac Côteau-Landing Franklin Centre Hudson Huntingdon Les Cèdres Ormstown Rigaud Rivière-Beaudette St-Clet Ste-Justine-de-Newton Ste-Marthe St-Polycarpe Valleyfield Vaudreuil	LIR-PQ12	Beloeil Boucherville Chambly Laprairie Longueuil Marieville St-Bruno Ste-Julie-de-Verchères St-Lambert St-Marc Varennes Verchères	LIR-PQ18	Bromont Cowansville Dunham Eastman Frelighsburg Granby Knowlton Mansonville St-Césaire St-Paul-d’Abbottsford Sutton
LIR-PQ05	Mirabel-St-Augustin Mirabel-St-Scholastique Oka St-Eustache	LIR-PQ13	Mascouche Terrebonne	Telebec Exchange Areas	
LIR-PQ06	St-Calixte-de-Kilkenny St-Hippolyte St-Jérôme St-Lin	LIR-PQ14	Berthierville Crabtree Lanoraie L’Épiphanie- l’Assomption Lavaltrie Le Gardeur Rawdon	TB-RIL-7	Contrecoeur St-Aimé St-Ours Ste-Victoire
LIR-PQ07	Mirabel-Aéroport Ste-Anne-des-Plaines Ste-Thérèse	LIR-PQ15	Joliette St-Alphonse-de-Rodriguez St-Barthélémy Ste-Julienne St-Félix-de-Valois St-Gabriel-de-Brandon St-Jacques St-Jean-de-Matha St-Michel-des-Saints St-Zénon	TB-RIL-8	St-Thomas-d’Aquin St-Jude St-Hugues Ste-Hélène-de-Bagot St-Simon
LIR-PQ08	Chomedey Laval-Est Laval-Ouest Pont-Viau Ste-Rose St-Vincent-de-Paul	LIR-PQ16	Pierreville Sorel St-Denis St-Pie-de-Guire St-Zéphirin Yamaska	TB-RIL-9	Notre-Dame-de-Stanbridge Venise-en-Québec
LIR-PQ10	Beauharnois Châteauguay Howick St-Chrysostôme St-Constant Ste-Martine St-Rémi			Independent Exchange Areas not in an LIR	
					Baie-du-Fèvre Lawrenceville Roxton Falls St-Liboire Ste-Rosalie Upton Valcourt

Table 3– Status in NPA 450 and Adjacent NPAs of NXXs that correspond to Future Canadian Geographic NPAs

Home NPAs & neighbouring NPAs		NXXs corresponding to NPAs																												Notes						
		Future Canadian NPAs (forecast to be needed for NPAs exhausting within 20 years)																																		
		236	249	257	263	273	354	365	367	368	382	387	428	431	437	460	468	474	487	537	548	568	579	584	639	672	683	742	753		825	851	871	873	879	942
343	ON	A	A	A	A	A	A	A	A	A	A	A	A	A	A	Z	A	A	A	A	Z	Z	A	A	A	A	A	A	A	Z	Z	A	A			
438	PQ	A	A	A	Z	A	A	A	S	A	A	A	A	Z	Z	Z	Z	Z	A	Z	Z	A	Z	Z	A	Z	Z	A	A	A	A	A	A			
450	PQ	S	Z	Z	S	Z	Z	Z	Z	S	Z	Z	Z	S	S	S	S	Z	S	S	S	Z	S	Z	S	Z	S	S	Z	Z	Z	Z	Z			
514	PQ	S	S	S	Z	S	S	S	S	S	S	S	Z	Z	Z	Z	Z	S	Z	Z	S	Z	Z	S	Z	S	Z	Z	S	S	S	S	S	S		
613	ON	S	S	S	S	S	S	AJ	AJ	S	S	S	AJ	AJ	AJ	AJ	Z	S	S	S	S	Z	Z	S	S	AJ	S	S	AJ	S	S	Z	Z	AJ	AJ	
819	PQ	A	Z	Z	S	Z	S	S	S	Z	S	Z	S	Z	S	Z	S	Z	S	S	S	Z	Z	S	S	S	Z	S	S	Z	Z	Z	S	Z		
Tot	S,A,AJ	6	4	4	4	4	5	5	5	5	4	5	3	4	4	1	4	4	4	4	4	0	3	5	4	5	3	4	6	4	2	2	5	4	135	
	Z	0	2	2	2	2	1	1	1	1	1	2	1	3	2	2	5	2	2	2	2	6	3	1	2	1	3	2	0	2	4	4	1	2	69	
	R	0	0	0	0	0	0	0	0	0	0	0	0	0	0	0	0	0	0	0	0	0	0	0	0	0	0	0	0	0	0	0	0	0	0	

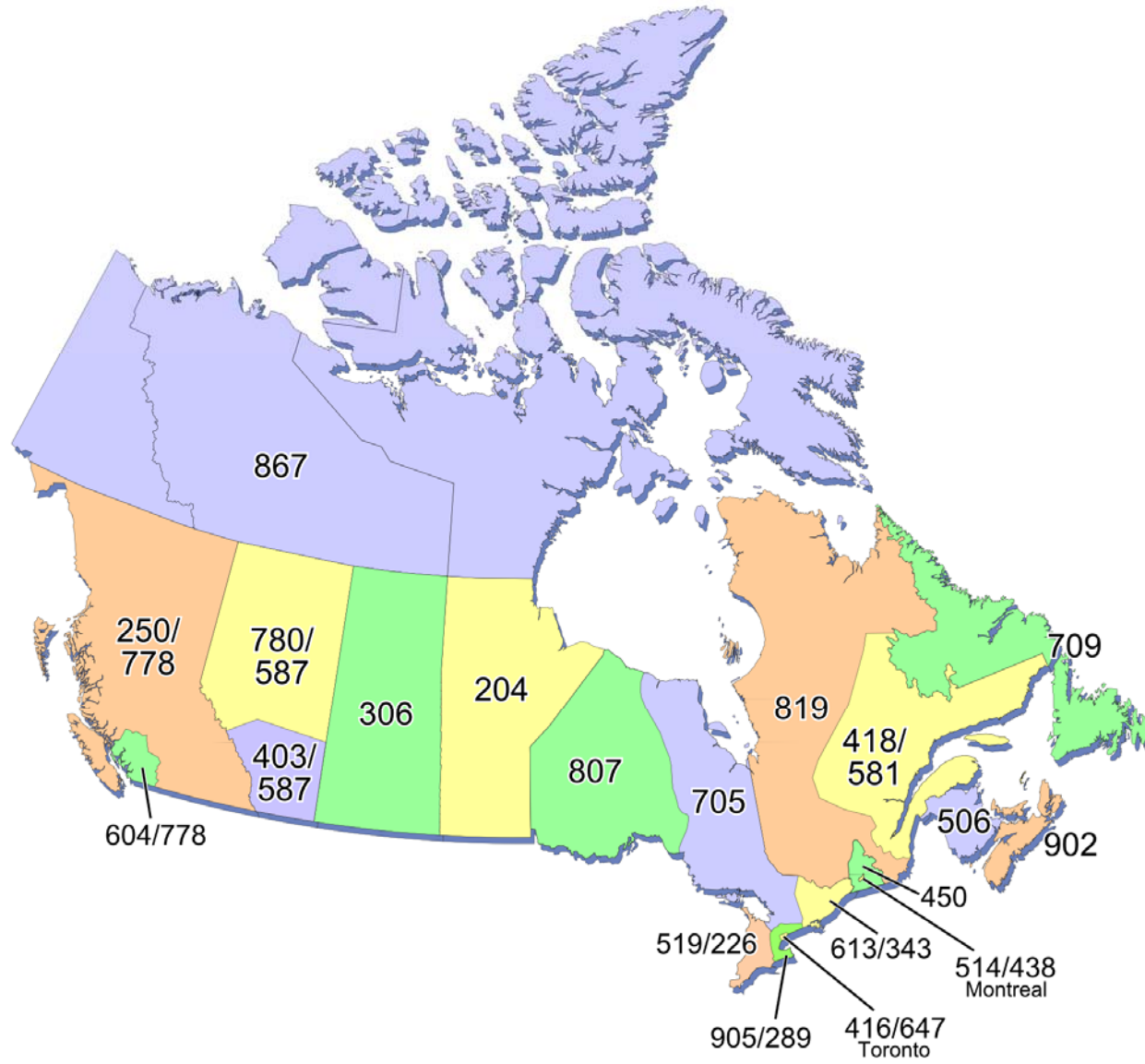
NXXs in Home NPA that correspond to NPAs in the future Canadian NPA Pool and are designated "Not Available for Assignment"		249	257	273	354	365	367	382	387	428	487	579	639	683	851	871	873	879	942
--	--	-----	-----	-----	-----	-----	-----	-----	-----	-----	-----	-----	-----	-----	-----	-----	-----	-----	-----

NXXs in Home & Neighbouring Cdn NPAs that correspond to NPAs in the future Canadian NPA Pool and are designated "Not Available for Assignment"		579
--	--	-----

Qty of home + neighbouring NPAs	6
---------------------------------	---

- A** Available
- AJ** A in Jeopardy Condition only, and after 2010 relief (to be confirmed)
- S** In-service or Assigned
- Z** Not Available

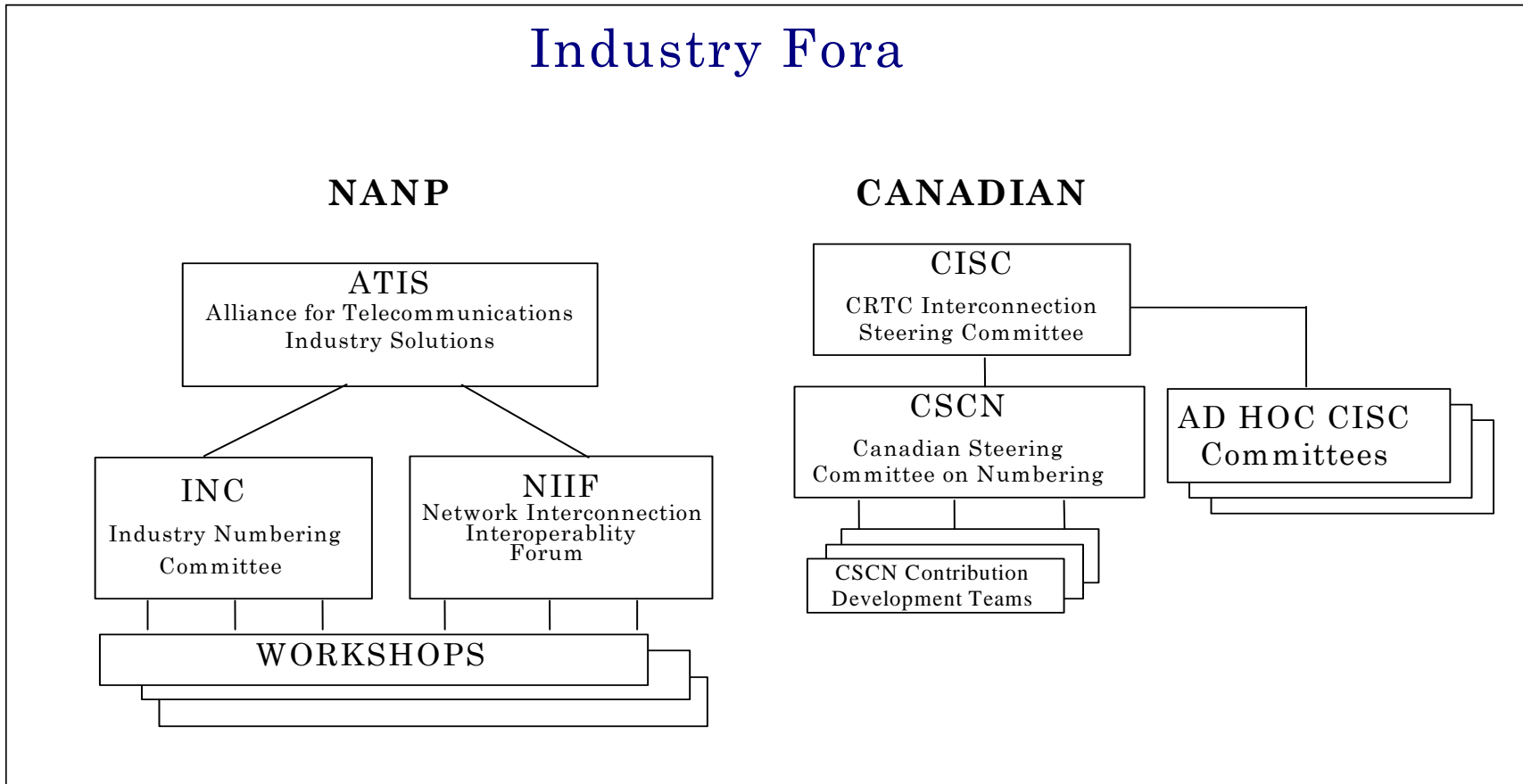
Canadian Geographic NPAs



The following is a brief summary of Canadian geographic area code relief history:

- 1947 – AT&T assignment of 86 area codes (9 Canada, 77 continental USA) in format N(0/1)X-NNX-XXXX (where N = 2 to 9 and X = 0 to 9);
 - Ontario: 416, 613;
 - Québec: 514, 418;
 - New Brunswick, Nova Scotia, PEI, Newfoundland & Labrador: 902;
 - Manitoba: 204;
 - Saskatchewan: 306;
 - Alberta: 403;
 - British Columbia: 604
- 1953 - new area code 519 for Ontario split from parts of 416 & 613
- 1955 – new area code 506 split from 902 for New Brunswick & Newfoundland & Labrador (902 retained for Nova Scotia & PEI)
- 1957 - new area code 705 for Ontario split from parts of 613 and 519
- 1957 - new area code 819 for Québec split from parts of 514 & 418
- 1960 - Yukon & the southern & western parts of the Northwest Territories begin to interconnect and use Alberta 403 area code
- 1962 - new area code 709 for Newfoundland & Labrador split from 506 (506 retained by New Brunswick)
- 1962 - new area code 807 for Ontario split from 705; 416/705 boundary modified (Peterborough area moves into 705)
- 1973 – NANP CO Code format changes from NNX to NXX; NANP format becomes N(0 or 1)X – NXX – XXXX (Interchangeable CO Codes); first NPA to change is NPA 213 in California; other NPAs changed gradually until Interchangeable NPA Codes were introduced in 1995
- 1975 - Québec's 819 area code extended to include Bell Canada part of the Northwest Territories
- 1990 – First Canadian Interchangeable CO Codes implemented in NPA 416
- 1993 (Oct) - new area code 905 splits from 416: 416 retained for Toronto Ontario; 905 for areas surrounding Toronto
- 1995 – Area Code format changes from N(0/1)X to NXX (Interchangeable NPA Codes); NANP format becomes NXX – NXX – XXXX
- 1996 (Oct) - new area code 250 splits from 604 in BC; 604 for southwestern mainland BC including Vancouver; 250 for Vancouver Island and BC Mainland excluding Lower Mainland
- 1997 (Oct) – new area code 867 implemented for Yukon and Northwest Territories (including Nunavut) including northern parts of Alberta previously served by 403 and northern parts of Québec previously served by 819; 403 is made exclusive to Alberta ; 819 is made exclusive to Québec
- 1998 (June) - new area code 450 splits from 514 in Québec; 514 retained for Montreal area, 450 for area surrounding Montreal
- 1999 (Jan) - new area code 780 splits from 403 in Alberta; 780 for N. Alberta (Edmonton); 403 retained for S. Alberta (Calgary)
- 2001 (March) - new area code 647 overlay on 416 in Toronto Ontario; mandatory ten-digit local dialing implemented (first Canadian overlay)
- 2001 (June) - new area code 289 overlay on 905 surrounding Toronto Ontario; mandatory ten-digit local dialing implemented
- 2001 (Nov) - new area code 778 (Greater Vancouver Regional District, Abbotsford and Mission) concentrated overlay of part of 604 (Lower Mainland BC including Vancouver); remaining 604 NXXs retained for 604 area outside the concentrated overlay; mandatory ten-digit local dialing implemented in 604 & 778

- 2006 (Oct) – new area code 226 overlay of 519 S. W. Ontario; mandatory ten-digit local dialing implemented in 226 & 519
- 2006 (Oct) – mandatory ten-digit local dialing implemented in area codes 613 & 819
- 2006 (Nov) – new area code 438 overlay of 514 Montreal area; mandatory ten-digit local dialing implemented in area codes 438, 450 and 514
- 2007 (July) – new area code 778 concentrated overlay of 604 is extended to cover all of British Columbia (province-wide overlay) to provide relief for area code 250; remaining 604 CO Codes become assignable throughout 604 region
- 2008 (Sept) – new area code 581 overlay of 418 NE Québec area including Québec City; mandatory ten-digit local dialing implemented (mandatory ten-digit local dialing becomes universal in the Province of Québec)
- 2008 (Sept) – new area code 587 overlay of 403 and 780 to serve all of Alberta (province-wide overlay); mandatory ten-digit local dialing implemented (mandatory ten-digit local dialing becomes universal in the Province of Alberta)
- 2008 (Sept) – mandatory ten-digit local dialing implemented in 250 area in British Columbia (mandatory ten-digit local dialing becomes universal in the Province of British Columbia)
- 2010 (May) – new 343 overlay of 613 E Ontario including Ottawa
- Total Canadian Geographic NPAs in-service at May 2010 = 28

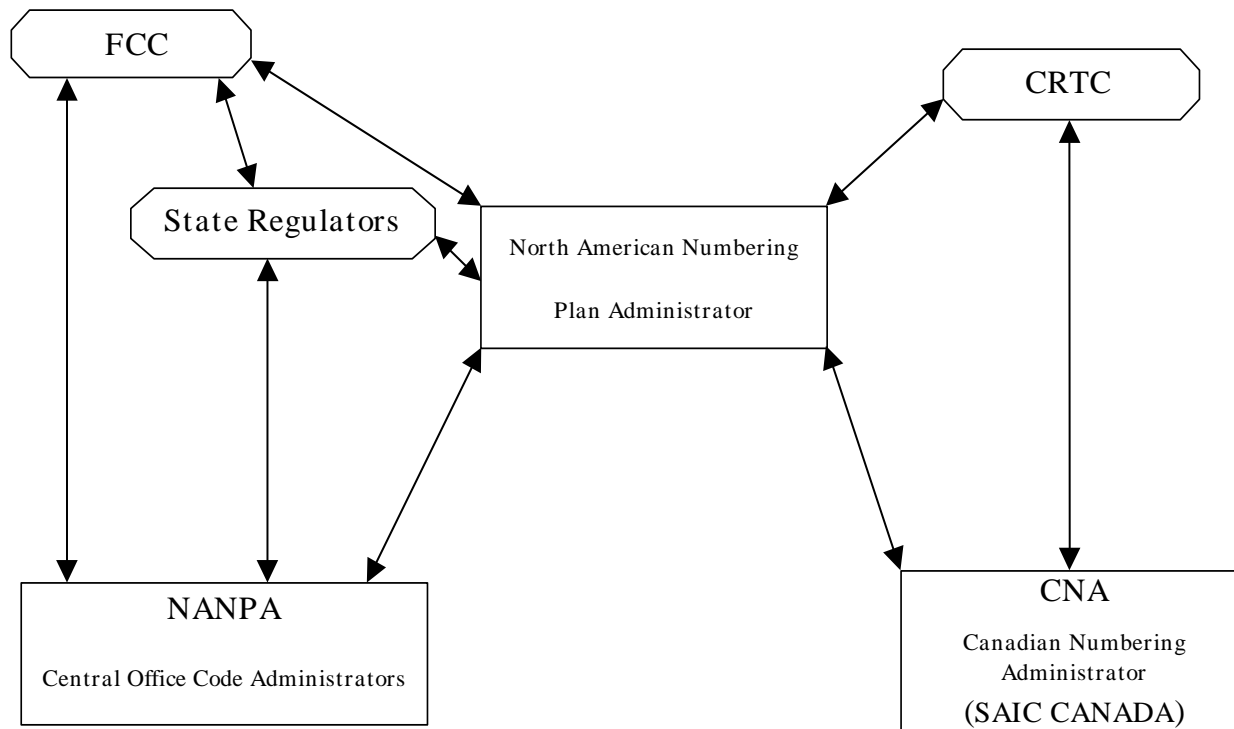


Industry Fora

Numbering Administration

United States

Canada



Numbering Administration

Distribution List

Regulatory E-Mail
Distributel Communications Limited
177 Nepean Street
Ottawa, ON
Canada
K2P 0B4
regulatory@distributel.ca

Laurence Baines
Sr. Telecom Provisioning & Cost Analyst
Rogers Wireless
8200 Dixie Road
Brampton, ON
Canada
L6T 0C1
Telephone: 647-747-4649
Fax: 647-747-4557
laurence.baines@rci.rogers.com

Bill Barsley
Manager SS7 & Switch Translations
TELUS Mobility
200 Consilium Place
Scarborough, ON
Canada
M1H 3J3
Telephone: 416-279-7989
Fax: 416-279-3930
bill.barsley@telus.com

Mario Beaudoin
Directeur des services techniques / Technical
Services Manager
Coop de télécommunication (CoopTel)
5521 chemin de l'Aéroport
Valcourt, QC
Canada
J0E 2L0
Telephone: 450-532-1039
Fax: 450-532-3147
mbeaudoin@cooptel.qc.ca

Dennis Béland
Director, Regulatory Affairs, Telecommunications
Quebecor Media Inc.
612 St-Jacques, 15e étage Tour Sud
Montreal, QC
Canada
H3C 4M8
Telephone: 514-380-4792
Fax: 514-380-4664
regaffairs@quebecor.com

Marc Berruyer
Network Planner
Videotron Ltd
2155 Boul. Pie IX, 3e etage, bloc A
Montreal, QC
Canada
H1V 2E4
Telephone: 514-380-4255
Fax: 514-899-8452
marc.berruyer@vtl.quebecor.com

Olena Bilozerska
Network Planning Manager
TELUS
300 Consilium Place, 9th Floor
Scarborough, ON
Canada
M1H 3G2
Telephone: 416-279-8521
Olena.Bilozerska@telus.com

Doug Birdwise
Associate Director - Network Planning
Bell Canada
160 Elgin St., Floor 4 (04-E009)
Ottawa, ON
Canada
K1G 3J4
Telephone: 613-781-4366
Fax: 613-569-9675
doug.birdwise@bell.ca

Samer Bishay
Iristel Inc.
11 Bowan Court
Toronto, ON
Canada
M2K 3A8
Telephone: 416-299-4521
Fax: 416-227-9059
sbishay@iristel.com

Joe Boutros
President
Globility Communications Corporation
108-5343 Dundas St West
Toronto, ON
Canada
M9B 6K5
Telephone: 416-385-0459
Fax: 416-385-0469
jboutros@globility.ca

Laurie Bowie
Network Planning
Bell Canada
162 Southfield Dr.
Strathroy, ON
Canada
N7G 3V6
Telephone: 519-245-8234
Fax: 519-245-5917
laurie.bowie@bell.ca

Glen Brown
Project Engineer
SAIC Canada
60 Queen Street, Suite 1516
Ottawa, ON
Canada
K1P 5Y7
Telephone: 613-683-3291
Fax: 613-563-3399
browng@saiccanada.com

Carolyne Bryan
Manager OEC
Bell Nexxia
5099 Creekbank Rd., Fl 4 NT
Mississauga, ON
Canada
L4W 5N2
Telephone: 905-212-0117
Fax: 905-219-6289
carolyne.bryan@bell.ca

Melanye Caisse
Telecom Analyst
ISP Telecom Inc
1155 Boul Rene-Levesque Ouest Suite 2500
Montreal, QC
Canada
H3B 2K4
Telephone: 416-548-4819
Fax: 416-548-4818
melanye@isptelecom.net

Fiona Clegg
CO Code Administration
SAIC Canada
60 Queen Street, Suite 1516
Ottawa, ON
Canada
K1P 5Y7
Telephone: 613-683-3285
Fax: 613-563-3399
cleggf@saiccanada.com

Bruno Crispin
Marketing Analyst - Quebec
Rogers Wireless
1200 McGill College Ave, 8th Floor
Montreal, QC
Canada
H3B 4G7
Telephone: 514-350-6527
Fax: 514-345-6859
bruno.crispin@rci.rogers.com

Mark Cuccia
317 Guilbeau Road, Apt.207-E
Lafayette, LA
USA
70506
Telephone: 504-460-0647
markjuccia@yahoo.com

David J. Currie
Chair
CANASA Communications
Committee
506 Christina Street North
Sarnia, ON
Canada
N7T 5W4
Telephone: 519-344-7509
Fax: 519-336-8927
dcurrie@src.net

Jean-Marc D'Aoust
Consultant
Cogeco Cable Inc.
1720 Route 200
Limoges, ON
Canada
K0A 2M0
Telephone: 613-443-1635
jmadaoust@cogocable.ca

Patrick Désy
Analyste principal, Affaires réglementaires
Quebecor Media inc.
612 St-Jacques, 15e étage Tour Sud
Montreal, QC
Canada
H3C 4M8
Telephone: 514-380-4325
Fax: 514-380-4664
desy.patrick@quebecor.com

Diane Dolan
Business Analyst
Distributel Communications Limited
177 Nepean Street
Ottawa, ON
Canada
K2P 0B4
Telephone: 613-212-5003
Fax: 613-237-7009
diane.dolan@distributel.ca

Shellene Drakes
Telus Mobility
Suite 1600, 200 Consilium
Scarborough,, ON
Canada
M1H 3J3
Telephone: 416-279-4880
shellene.drakes@telusmobility.com

Thanh-Nha Duong
Switching & IP Planning Analyst
TELUS Communications (Québec) Inc.
630 Rene-Levesque O. 22e etage, Courrier H1630
Montreal, QC
Canada
H3B 1S6
Telephone: 514-788-1540
Fax: 514-788-8337
thanh-nha.duong@telus.com

Donald Dupuis
Maskatel
175 Rue Principal
St-Thomas D'Aquin, QC
Canada
J0H 2A0
Telephone: 450-250-7000
Fax: 450-250-5000
donald.dupuis@maskatel.qc.ca

Yves Duval
Directeur de l-exploitation
Sogetel inc.
111 Rue du 12-Novembre
Nicolet, QC
Canada
J3T 1S3
Telephone: 819-293-1266
Fax: 819-293-6120
yves.duval@sogetel.com

Paul Frappier
Téléphone Milot Inc.
2653 Laflèche, C.P. 30
Saint- Paulin, QC
Canada
J0K 3G0
Telephone: 819-268-2050
Fax: 819-268-2951
paul.frappier@telmilot.com

Helene Gingras
Telebec Ltee
555 Central, 3e Etage
Val-d'Or, QC
Canada
J9P 1P6
Telephone: 819-824-7277 ext.7277
Fax: 819-824-7044
hgingras@telebec.com

Suzanne Hardy
iDEN Translations, Network Engineering
TELUS Mobility
, ON
Canada
Telephone: 416-279-3597
suzanne.hardy@telus.com

J. David Farnes
Vice President, Regulatory Affairs
Canadian Wireless Telecommunications
Association (CWTA)
130 Albert Street, Suite 1110
Ottawa, ON
Canada
K1P 5G4
Telephone: 613-233-4888 ext. 106
Fax: 613-233-2032
documentcontrol@cwta.ca

Anne Gertzbein
Manager Ancillary Services (411/911) & Local
PIC/CARE
MTS Allstream
200 Wellington Street West
Toronto, ON
Canada
M5V 3G2
Telephone: 416-640-5229
Fax: 416-640-5219
anne.gertzbein@mtsallstream.com

Mylene Grenier
Manager Switched Network Design
Bell Canada
1050 Beaver Hall 170-07
Montreal, QC
Canada
Telephone: 514-870-2262
Fax: 514-870-5659
mylene.grenier@bell.ca

Dulari Harrichand
Project Manager IS/IT 514 Overlay
Bell Canada
1 Dundas Street West, Floor 9
Toronto, ON
Canada
M5G 1Z3
Telephone: 416-215-2243
Fax: 416-585-2347
dulari.harrichand@bell.ca

Marian Hearn
Project Executive
Canadian LNP Consortium Inc.
11-300 Earl Grey Drive, Suite 113
Kanata, ON
Canada
K2T 1C1
Telephone: 613-256-2600
Fax: 800-406-9250
hearn@clnpc.ca

Larry Hishon
Vice-President Business Development
Fibernetics Corporation
583 Eastgate Walk
Waterloo, ON
Canada
N2K 2V9
Telephone: 519-571-7433
Fax: 519-772-5014
lhishon@fibernetics.ca

Lyne Jacques
Specialist, Switch Engineering
Bell Mobility
, QC
Canada
Telephone: 514-420-5385
l.jacques@bell.ca

Jasdev Kalsi
Facilities Coordinator
Rogers Wireless
800 de la Gauchetiere St West Suite 4000
Montreal, QC
Canada
H5A 1K3
Telephone: 514-937-0102 Ext. 4209
jasdev.kalsi@rci.rogers.com

Suresh Khare
CO Code Manager
SAIC Canada
60 Queen Street, Suite 1516
Ottawa, ON
Canada
K1P 5Y7
Telephone: 613-683-3296
Fax: 613-563-3399
khares@saiccanada.com

Jeanne Lacombe
Senior Analyst
Canadian Radio-television and
Telecommunications Commission
Central Building Les Terrasses de la Chaudière 1
Promenade du Portage
Gatineau, QC
Canada
K1A 0N2
Telephone: 819-997-4586
jeanne.lacombe@crtc.gc.ca

Line Laflamme
Bell Canada
930 D'Aiguillon B550.2
Quebec City, QC
Canada
Telephone: 418-691-4171
Fax: 418-691-4176
Line.Laflamme@bell.ca

Sylvie Laflamme
Directrice Administrative
Canasa (Quebec)
Case postal 9
Saint-Constant, QC
Canada
J5A 2G1
Telephone: 514-990-2349
Fax: 514-990-2349
slaflamme@canasa.org

Peter Lang
Manager, Carrier Relations
Rogers Cable Communications Inc. (RCCI)
333 Bloor Street East
Toronto, ON
Canada
M4W 1G9
Telephone: 416-935-7918
Fax: 416-498-3002
Peter.Lang@rci.rogers.com

Talusier Lasalle
Federation of Canadian Municipalities
24 Clarence Street
Ottawa, ON
Canada
K1N 5P3
tlasalle@fcm.ca

Elise Lavigne
Coordinator
MTS Allstream
Calgary, AB
Canada
Telephone: 403-705-6946
Fax: 403-705-6283
elise.lavigne@mtsallstream.com

Jeremy Lendvay
Senior Analyst
CRTC
1 Promenade du Portage
Gatineau, QC
Canada
K1A 0N2
Telephone: 819-997-4946
Fax: 819-953-3756
jeremy.lendvay@crtc.gc.ca

Natalie Lessard
SAIC Canada
60 Queen Street, Suite 1516
Ottawa, ON
Canada
K1P 5Y7
Telephone: 613-683-3288
Fax: 613-563-3399
lessardn@saiccanada.com

Venice Leung
Technical Planner
Allstream
438 University Ave, 5th Floor
Toronto, ON
Canada
M5G 2K8
Telephone: 416-640-9233
Fax: 416-644-9672
venice.leung@allstream.com

Chris Liu
Senior IP Telephony Applications Designer
Rogers Cable Communications Inc.
10 Dyas Road
Don Mills, ON
Canada
M3B 1V5
Telephone: 416-649-7290
Fax: 416-649-7201
chrisliu@gmail.com

Chris Liu
Senior IP Telephony Applications Designer
Rogers Cable Communications Inc.
10 Dyas Road
Don Mills, ON
Canada
M3B 1V5
Telephone: 416-649-7290
Fax: 416-649-7201
chris.liu@rci.rogers.com

Francois Lizart
Rogers AT&T Wireless
600 De Maisonneuve W. 34 Floor
Montreal, QC
Canada
H3A 3J2
Telephone: 514-734-6657
Fax: 514-345-6859
flizart@rci.rogers.com

Deirdre Massiah-Gomes
Manager - Planning and Engineering
TELUS
200 Consilium Place, Suite 1600
Scarborough, ON
Canada
M1H 3J3
Telephone: 416-279-3070
Fax: 416-279-3949
deirdre.massiah-gomes@telus.com

Kevin McGouran
Manager - Customer Translations
MTS Allstream
370 King Street, Floor 6
Toronto, ON
Canada
M5V 1J9
Telephone: 416-204-5868
Fax: 416-644-9864
kevin.mcgouran@allstream.com

David McKeown
View Communications Inc.
1668 Valentine Gdn.
Mississauga, ON
Canada
L5J 1H5
Telephone: 905-823-9996
Fax: 905-823-9288
dmckeown@viewcom.ca

Bill Mason
Manager, Numbering Administration
Canadian Radio-television and
Telecommunications Commission
Central Building Les Terrasses de la Chaudière 1
Promenade du Portage
Gatineau, ON
Canada
K1A 0N2
Telephone: 819-953-8882
Fax: 819-953-0795
bill.mason@crtc.gc.ca

Jean-Francois Mathieu
La Compagne de Telephone Upton
732 Rue St-Ephrem C.P. 90
Upton, QC
Canada
J0H 2E0
Telephone: 450-549-4541
Fax: 450-549-4455
j-fmathieu@telupton.qc.ca

Keith McIntosh
Manager, Regulatory Affairs
Canadian Wireless Telecommunications
Association (CWTA)
130 Albert Street, Suite 1110
Ottawa, ON
Canada
K1P 5G4
Telephone: 613-233-4888 ext. 213
Fax: 613-233-2032
kmcintosh@cwta.ca

Vadim Medvedev
Carrier Relations
Rogers Cable Communications Inc.
8200 Dixie Road
Brampton, ON
Canada
L6T 0C1
Telephone: 647-747-4143
vadim.medvedev@rci.rogers.com

Francois Menard
Project Manager
Telecommunications Xittel Inc
1350 Royale Office 800
Trois Riviere, QC
Canada
G9A4J4
Telephone: 819-374-2526 Ext 2268
Fax: 819-374-0395
fmenard@xittel.net

Simon-Pierre Olivier
Director, Regulatory Affairs
Rogers Communications Inc.
1200 McGill College, Bureau 800
Montreal, QC
Canada
H3B 4G7
Telephone: 514-350-6595
simon-pierre.olivier@fidomobile.ca

Lauro Ono
High Road Communications
360 Adelaide Street, 4th Floor
Toronto, ON
Canada
M5V 1R4
Telephone: 416-368-8348
Fax: 416-368-6253
lono@highroad.com

Glenn Pilley
Canadian Numbering Administrator
SAIC Canada
60 Queen Street, Suite 1516
Ottawa, ON
Canada
K1P 5Y7
Telephone: 613-683-3289
Fax: 613-563-9293
pilleyg@saiccanada.com

Lucie Pugliese
Administrator
Numbering Alliance
1575 Saturne
Brossard, QC
Canada
J4X 1N4
Telephone: 450-465-8277
Fax: 450-465-0703
lucie.pugliese@sympatico.ca

Robert Quance
President
ISP TELECOM Inc.
630 René-Lévesque blvd. West, Suite 2360
Montreal, QC
Canada
H3B 1S6
Telephone: 514-726-1199
Fax: 514-484-3662
robert@isptelecom.net

Paul Robinson
Manager - Voice Network Planning
Rogers Cable & Telecom Network
Toronto, ON
Canada
Telephone: 647-747-4197
Fax: 647-747-4644
paul.robinson@rci.rogers.com

Leo Santoro
Network Analyst
Bell Mobility
2920 Matheson Blvd East, 6th floor
Mississauga, ON
Canada
L4W 4M7
Telephone: 905-282-3021
Fax: 905-282-3106
leo.santoro@bell.ca

Angie Specic
Director, Marketing Communications &
Advertising
Allstream
200 Wellington Street West
Toronto, ON
Canada
M5V 3G2
Telephone: 416-345-2131
angie.specic@allstream.com

Brenda Stevens
Director - Intercarrier Relations
Rogers Cable Communications
333 Bloor St. East, 9th Floor
Toronto, ON
Canada
M4W 1G9
Telephone: 416-935-4898
Fax: 416-935-4875
brenda.stevens@rci.rogers.com

Bogdan Tanasie
IP Telephony Applications Designer
Rogers Cable Communications Inc.
10 Dyas Road
Don Mills, ON
Canada
M3B 1V5
Telephone: 416-649-7281
bogdan.tanasie@rci.rogers.com

Gerry Thompson
Manager, Intercarrier Relations
Rogers Communications Inc. (RCI)
333 Bloor Street East, 9th Floor
Toronto, ON
Canada
M4W 1G9
Telephone: 416-935-5239
Fax: 416-935-7212
Gerry.Thompson@rci.rogers.com

Joel Thorp
Director - Intercarrier Relations
Rogers Communications Inc. (RCI)
333 Bloor St. East, 9th Floor
Toronto, ON
Canada
M4W 1G9
Telephone: 416-935-7213
Fax: 416-935-7719
joel.thorp@rci.rogers.com

Tom Wong
Globility Communications Corporation
108-5343 Dundas St West
Toronto, ON
Canada
M9B 6K5
Telephone: 416-238-8802
Fax: 416-385-0469
twong@globility.ca

Robert Yates
Lemay-Yates Associates Inc.
1200, De Maisonneuve Blvd. West, Suite 7F
Montreal, QC
Canada
H3A 0A1
Telephone: 514-288-6555
Fax: 514-288-6555
LYA@LYA.com

Sam Yung
Public Policy & Regulatory Affairs
TELUS
21st Floor, 10020-100 Street
Edmonton, AB
Canada
T5J 0N5
Telephone: 780-493-5288
Fax: 780-493-3066
sam.yung@telus.com

Tom Zimmicki
Chief Technology Officer
Fibernetics Corp
55 Northfield Dr East Suite 210
Waterloo, ON
Canada
N2K 3T6
Telephone: 519-489-6700
tom@fibernetics.ca